

# IT-CENTRE

## **Introduction:**

IT is short form of Information Technology. It is a broad topic spanning all aspects of managing and processing information, especially within a large company or organization. IT is generally not used in reference to personal or home computing and networking.

IT is closely related to Computer science that deals with the physical hardware to the operating systems, applications, databases, storage, servers and more. The department of an organization which deals in such phenomena is known as IT department. This department is also referred to EDP (Electronic Data Processing) department.

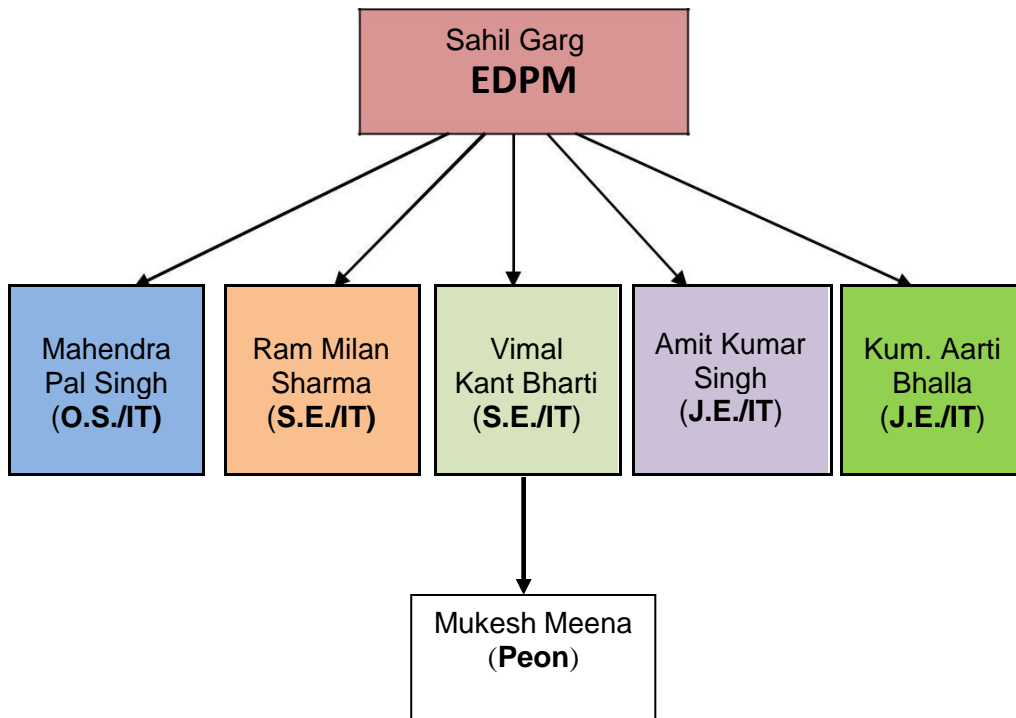
IT Centre/EDP Centre Agra was set up under Phase II of the scheme of "Divisional Computerization" in accordance with Board's directive and started functioning in present premises from Sept. 2005.

## **On going works**

1. Implementation and management of IPAS application software in Agra Division.
2. Printing of all Pay bills and their supporting vouchers.
3. Website Management & Tender uploading.
4. Procurement of PC's & its peripherals under DRM & ADRM(I) and ADRM(O) power.
5. Annual maintenance contract [AMC ] of computers & its peripherals in DRM Office, Agra-cantt.
6. Software up gradation and maintenance of Biometric attendance system, registration of user, report generation.
7. Technical Clearance of Computer, Printer, UPS and utility software.

## Organization:

The present Organization of IT Centre is as follows:



## STAFF POSITION

Sr. No.	Category	Sanctioned Post at AGC	On Roll AGC
1.	SSE[IT]/SE[IT]	04	04 on promotion)
2.	JE[IT]	01	00
3.	Peon	02	01
<b>TOTAL</b>		<b>07</b>	<b>05</b>

## Equipments:

### HARDWARE:

For the day today working of IT Centre, following Computer Peripherals are available:

S. No		No.	Make	Year of installation	Specification			
					Processor	OS	Ram	HDD
1	<b>Server</b>	3	HP	2013	-	Linux	8 GB each	80*4*3
2	No of standalone/client computer system	10	KBS, HP	20-12,13,14,15,16,08,09	Core2Duo, Pentium(R), i5	Windows 7, 8.1 pro	1,2,4 GB	320, 500 GB

	<b>Printers</b>	No.	Make	Year of installation
i	All in one Inkjet	02	HP Officejet Pro 8710, HP Ink Advantage 3635	2017, 2018
ii	Laser	03	Canon F166400(01 nos.), Brother HL-L2361DN(02 nos.), HP laserjet Pro M12w	2014, 2016 (02 nos.),2017
iv	On-Line Printers	02	LIPI Model 6810, 6810L	Oct 2016, Nov. 2018

	<b>UPS</b>	No.	Make	Year of installation
i	Online	04	NPS	2015
ii	Offline	06	Samtek, RPC,UPS, Microtek, Elnova, RS Power	2006,08,11,12,16,18 (02 nos.)

- PRIME -AFRES Servers [04 Nos.],
- LIPI model 6810, 6810L for pay-printing,
- On-line UPS [04 Nos.] installed for uninterrupted power supply to servers and networking

Software:

<b>Name of application</b>	<b>Functions of Application</b>	<b>Data Fields Stores</b>	<b>Links to external Application Present</b>
IPAS	Maintenance of entire account of divisional accounts office and personnel office works related to employees data	Accounts related Fields and Personnel employee data fields. (CRIS knows)	ARPAN
e-SR	Download scanned pages of employee's Service Record.	8 digit PF/NPS number, password	MySQL, PHP
AMC Complaint Portal	Online register complaint related to Computer, Printer, UPS etc.	Name, Designation, Type of complaint, detailed complaint, Complaint tracking system etc.	Apache Tomcat, MySQL, Java

### AMC/CMC details

<b>S. No</b>	<b>Whether HW maintenance contract is AMC or CMC</b>	<b>Computers and peripherals AMC of DRM office/AGC</b>
1	Name of AMC/CMC Contractor	M/S Commercial Computers and Services
2	Contract expiry date	24/08/19
3	Contract value	Rs. 707873.65/- for 2 yrs
4	All inclusive rate of items covered under contract	
a	Server	Nil
b	Computer	95 Qty
c	Laser + Inkjet +Dot-matrix printers	29+27+13 Qty
d	0.5KVA offline + 1/2 KVA online UPS	44+25 Qty.
e	Network	Nil

## Staff Beneficiary Programmes Implemented.

### 1. e- SR Application

An application that lets employees of Agra Division to download their scanned Service Records. This application is now available on N.C. Railway website. Employees have to register themselves first on the portal and then login using 8 digit employee number/NPS number and password.

Step 1: Go to [www.ncr.indianrailways.gov.in](http://www.ncr.indianrailways.gov.in) in Google Chrome.

Step 2: Move cursor on About Us → Divisions → Agra Division

The screenshot shows the North Central Railway website interface. The main navigation menu is highlighted in blue. The 'About Us' menu is expanded, showing a list of options including 'Divisions'. The 'Divisions' menu is further expanded, showing 'Agra Division' as the selected option. The 'Agra Division' menu is expanded, showing 'e-Applications' as the selected option. The 'e-Applications' menu is expanded, showing a list of options including 'General', 'Information available U/s 4(1)(b) of RTI Act', 'Officers Rest House', 'e-Applications', 'Engineering', 'Contact Us', 'Operating', 'Signal & Telecom', 'Commercial', 'Safety', 'Electrical', 'Accounts', 'IT', 'Mechanical', 'Personnel', 'Medical', and 'security'. The 'e-Applications' option is highlighted in white. The website header includes the North Central Railway logo, the text 'North Central Railway', and a 'Skip to Main Content' link. The date and time are displayed as 'Thursday, March 7, 2019 12:38:30 IST'. The URL is 'http://www.ncr.indianrailways.gov.in/index.jsp?lang=0'. The page content includes a banner image of a train and a tree, and a section titled 'GSTN MANUAL INVOICE F' with a sub-section '4 Years Achievem'. The footer includes a search bar and a list of links for 'Tenders', 'Modification in 25kV OHE in conr', 'Hiring of Multi utility vehicles at', 'Car Parking at Cantt Side and Cit', and 'Cycle/Scooter/Motor Cycle Parki'. The footer also includes a list of links for 'AAGMC', 'Pres', 'ad.', 'ration', '22354', 'y)', 'ration o'.

Step 3: Click on e- Applications.

Step 4: Click on A) service records of Agra division employees, as shown in figure below.

The screenshot shows the North Central Railway website interface. At the top, there is a navigation bar with the date and time 'Thursday, March 7, 2019 12:44:58 IST', a 'Skip to Main Content' link, and a 'Font Size' selector. Below this is the main header area featuring the Indian Railways logo, the text 'North Central Railway', a '15 YEARS OF CELEBRATING THE TRAILBLAZER' badge, and social media icons for Facebook, Twitter, and YouTube. A search bar is also present. A horizontal menu below the header contains links for 'About Us', 'IR Personnel', 'News & Recruitment', 'Tenders & Notices', 'Vendor Information', and 'Public Services'. On the left side, there is a vertical sidebar menu with a 'Home' section and several sub-links: 'Officers' Rest House', 'Information available U/s 4(1) (b) of RTI Act', 'General', 'Contact Us', 'Engineering', 'Signal & Telecom', 'Safety', 'Commercial', 'Operating', and 'Electrical'. The main content area on the right contains utility links for 'Bookmark', 'Mail this page', and 'Print this page', followed by a 'QUICK Select' button. The primary content consists of two links: 'A) Service Record of Agra Division Employees --> [Click here](#)' and 'B) Computer/Printer/UPS Complaint Forum --> [Click here](#)'. The first link is circled in red, and a black arrow points to it from the right. Below these links is a blue underlined instruction: 'PLEASE READ THESE INSTRUCTIONS(IN HINDI) BEFORE USING THE APPLICATION'. At the bottom right, a source note reads: 'Source : North Central Railways / Indian Railways Portal CMS Team Last Reviewed'.

Step 5: Click on Register Here.

ip

**Service Record of NCR Agra Division**

Username (Enter Your Eight Digit PF/NPS No.)

Password

Download your e-SR in PDF


Not yet Registered? [Register Here](#)

Users Registered:64

Developed & Maintained by: IT Center/Agra  
For any Problem & Forgot password kindly contact to IT Center/Agra on 22034/22058 .

Step 6: Enter Employee Number (last 8 digits) as username, Password to Register.

Step 7: Click on Register.



## Register to NCR/AGC e-SR Portal

Username (Enter Your Eight Digit PF/NPS No.) \*

Email (Not Mandatory)

Password

Confirm password

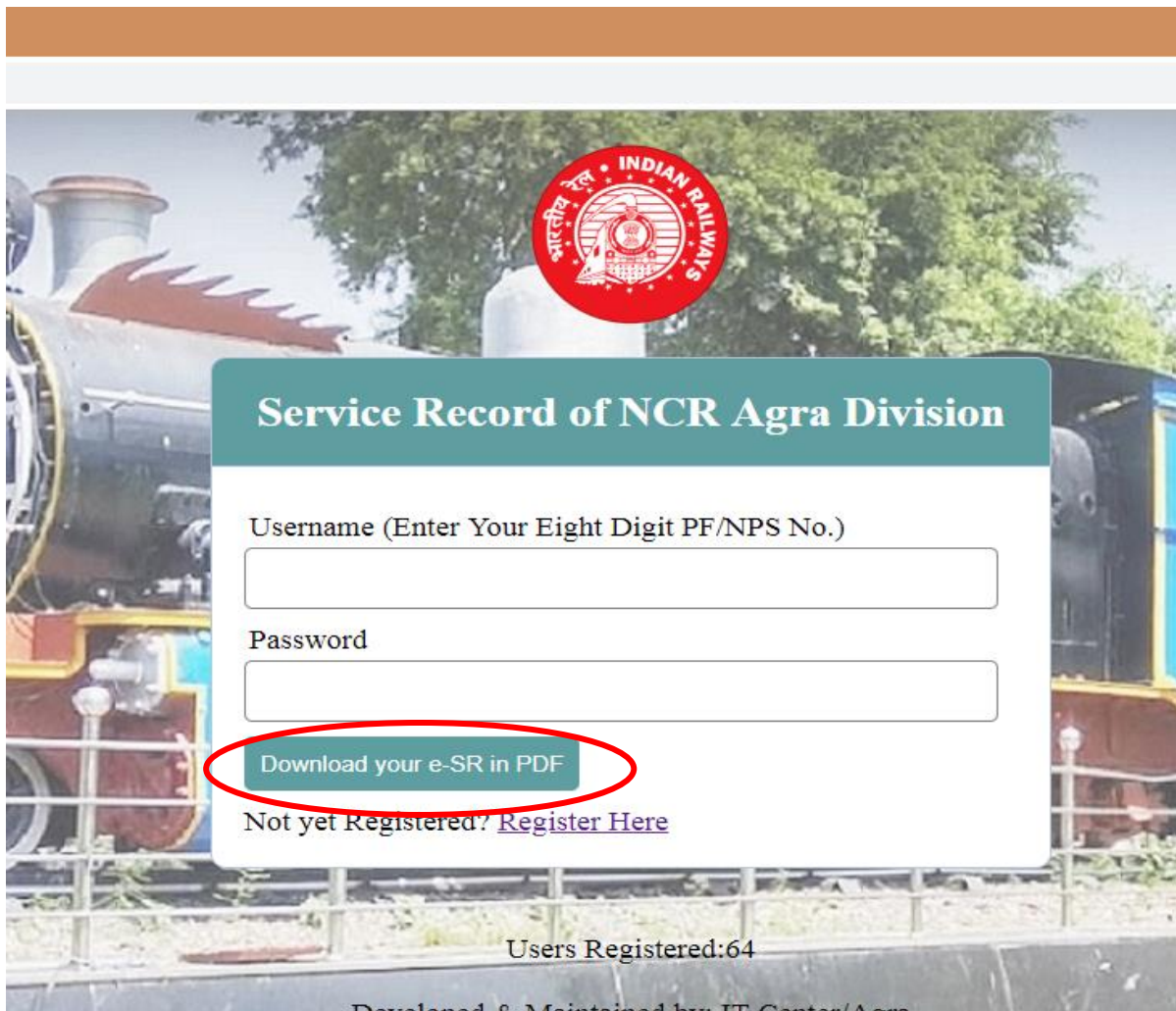
**Register** \* last 8 digits of your Employee Number

Already Registered? [Sign in](#)

Developed & Maintained by: IT Center/Agra  
For any Problem & Forgot password kindly contact to IT Center/Agra on 22034/2205

Step 8: After successful registration, enter your username and password and click on “Download your SR in PDF” to download SR in PDF format.



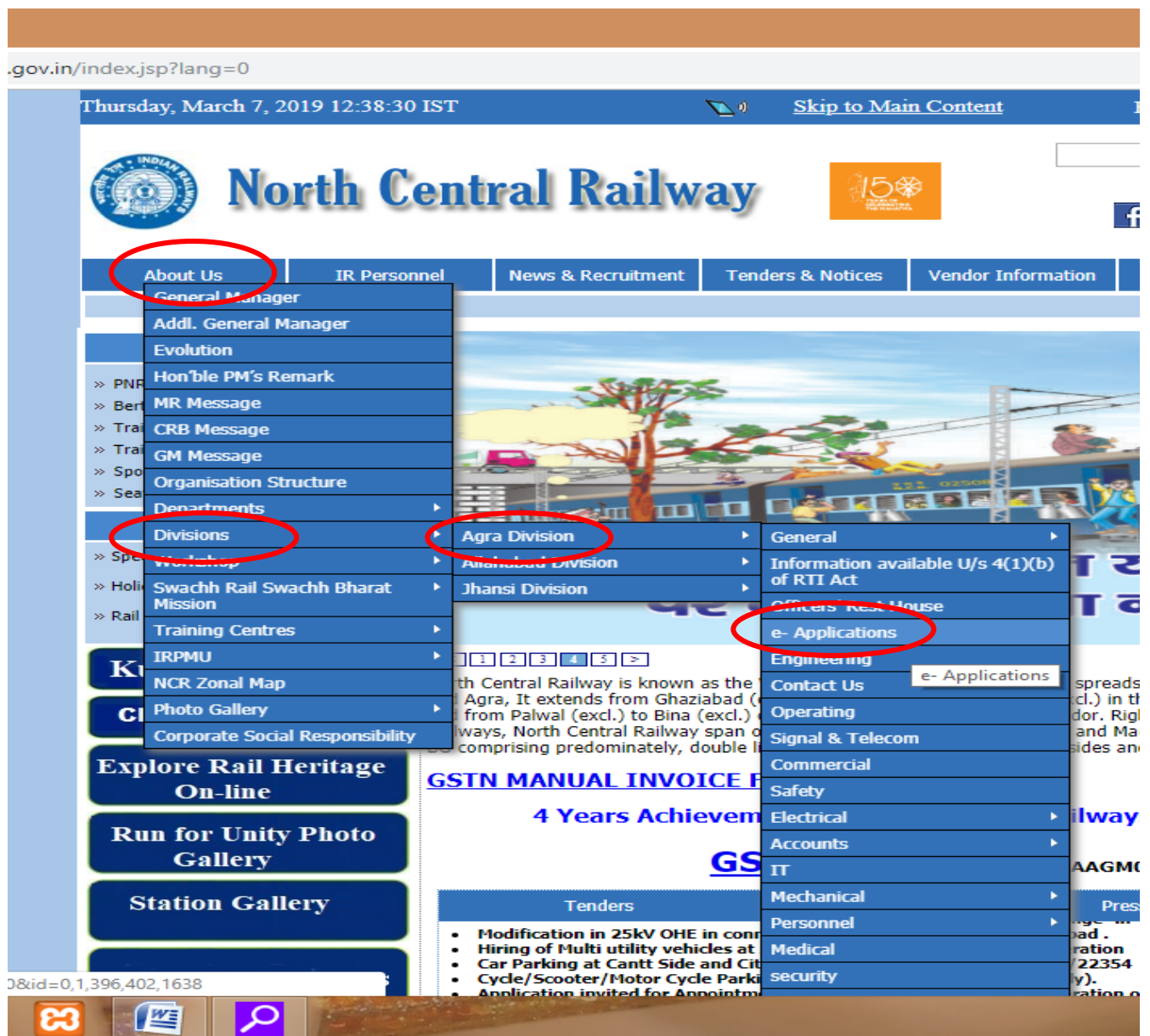


## 2. Computer, Printer and UPS Complaint Portal

Now employees of Agra Division can register and track their Computer, Printer, UPS related complaints in real time and without any difficulty. Just register your online complaint on our portal, which is available on NCR website.

Step 1: Go to [www.ncr.indianrailways.gov.in](http://www.ncr.indianrailways.gov.in) in Google Chrome.

Step 2: Move cursor on About Us → Divisions → Agra Division



Step 3: Click on e- Applications.

Step 4: Click on B) Computer, Printer and UPS Complaint Forum. You can also read instructions to use this software by clicking on the link below, as shown in figure below.



# North Central Railway



Search :



हिन्दी

[About Us](#)

[IR Personnel](#)

[News & Recruitment](#)

[Tenders & Notices](#)

[Vendor Information](#)

[Public Services](#)

Home

» [Officers' Rest House](#)

» [Information available U/s 4\(1\) \(b\) of RTI Act](#)

» [General](#)

» [Contact Us](#)

» [Engineering](#)

» [Signal & Telecom](#)

» [Safety](#)

» [Commercial](#)

» [Operating](#)

» [Electrical](#)

[Bookmark](#)

[Mail this page](#)

[Print this page](#)

QUICK Select

A) Service Record of Agra Division Employees --> [Click here](#)

B) Computer/Printer/UPS Complaint Forum -> [Click here](#)

[PLEASE READ THESE INSTRUCTIONS\(IN HINDI\) BEFORE USING THE APPLICATION](#)

Source : North Central Railways / Indian Railways Portal CMS Team Last Reviewed

### 3. Biometric Attendance system

Upto 28<sup>th</sup> Feb 2019, around 22 nos. 'wall-mounted' as well as several 'desktop based' Aadhar enabled Bio-metric machines were installed, configured and fully functional in the entire DRM's office. A desktop based Biometric Fingerprint device is now active in every Officer's chamber in the DRM office. In many departments, staff mark their daily attendance on separately installed desktop based Biometric Fingerprint device. CCTV monitoring of these devices as well as the work of software up-gradation is also being handled by IT Centre.

\*\*\*\*\*