

## 1. About us

- Planning & Utilization of Diesel Locomotives over Agra Division in co-ordination with nearby Division and Loco Sheds facilitating smooth Diesel operation.
- Reduction of detentions and ensuring reliability of Diesel operation through failure monitoring. Failure analysis and implementation of remedial measures.
- Monitoring of various operational parameters to keep a tab on health and status of diesel Locomotive on real time basis through REMMLOT (Remote monitoring and management of locomotives & trains) system provided in power control cell to assist trouble shooting and root cause analysis of failures.

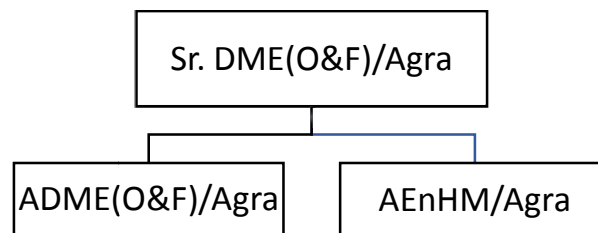
### 1.1 Accident Relief and Disaster Management

- Operation and maintenance of 'A' Class ART (Accident relief Train) equipped with 140 Ton BD (breakdown) Crane.
- Operation and maintenance of HS-SPARME (high speed self propelled accident relief medical equipment).
- Regular drills of ART and SPARME for 24X7 readiness for restoration and rescue operation/activities.
- Ensuring availability of adequate tools and equipments prescribed for ART and HS-SPARME as per CAMTECH Manual.

### 1.2 EnHM Wing:

- I. Monitoring and coordination of all environment related issue.
- II. Monitoring and coordination of EnHM fund provided under 1% provision of environment related works in the sanctioned detailed estimates of all sanctioned works.
- III. Key role in organizing Environmental related events like swachhta pakhwara, world environment day, awareness campaigns and intense cleanliness drives as per HQ/NCR's guidelines.

## 2. Organization Chart



### 3. Rail Diesel Installation.

- **(RDIs)**

Sr. No.	Fuelling Installation	Capacity	Installed by
1	RDI/MTJ	140 KL	IOCL
2	RDI/IDH	140 KL	IOCL
3	RDI/DHONG	40KL	IOCL

4. RTI as per Clause (b) of the Act

SN	Item No.	Disclosure	Comments of Railway.
1	4(1)(b)(i)	Particulars of Organization, functions and duties	Functions 1) Diesel operation 2) Disaster management 3) EnHM
2	4(1)(b)(ii)	Power and duties of its officers and employees	Can be accessed at — <u>Indian Railway Rolling Stock Code</u> — <u>Model SOP.</u>
3	4(1)(b)(iii)	Procedure followed in decision making process	Can be accessed at — <u>Indian Railway Rolling Stock Code</u> — <u>Model SOP.</u>
4	4(1)(b)(iv)	Norms for discharge of functions.	As enumerated in <u>Employee Charter</u> .
5	4(1)(b)(v)	Rules, regulations, instructions manual and records for discharging functions	As enumerated in <u>Codes And Manuals</u>
6	4(1)(b)(vi)	Categories of documents held by the authority under its control	As enumerated in <u>Indian Railway Rolling Stock Code</u>
7	4(2)	No. Of employees against whom Disciplinary action has been proposed/ taken.	The position of outstanding DAR cases of Mechanical Dept/O&F/Agra is as under:-  DAR Gaz-Nil.  DAR Non Gaz-Nil
8	Records for discharging function [Section 4(1)(b)(v)]	Transfer policy and transfer orders	Transfers as per policy circulated from time to time.