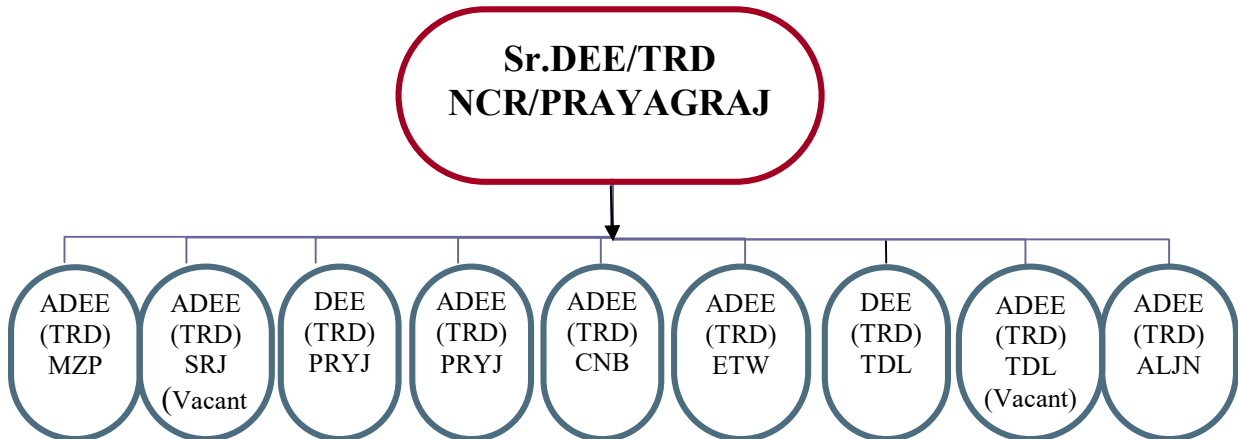


ELECTRICAL (TRD)

1.1 Organization



- (i) Maintains 2732.204 TKM of Electrified Track, 980.52 of electrified RKM with three 220 / 132 kV GSS and 23 Nos, Sub Stations of 132 kV / 25 kV TSS, and 02 Nos. 25 kV feeding post , 799.551 Km 132 kV Transmission Line and 34.676 Km of 220 kV TR – line.

CATEGORY	Sanctioned Strength	Men on Roll	Vacancy
Supervisors	122	90	32
Drawing	5	3	2
Ministerial	64	46	18
Total Group "C"	520	434	86
Total Group "D"	426	370	56
TOTAL	1137	943	194

- (ii) There are Sixteen PSI depots e.g. SBDR, MZP, SRJ, NYN, PRYJ, FTP, CNB, RRH, PHD, ETW, SKB, TDL, HRS, ALJN, KRJ & DER and Eighteen OHE depots e.g. SBDR, CAR, MZP, MJA, SRJ, MKP, SFG, SRO, FTP, CNB, RRH, PHD, ETW, TDL, HRS, ALJN, KRJ & DER.
- (iii) There are 02 Remote Control Centres, one at PRYJ and one at TDL and one Central Repair Shop at TDL in PRYJ Division.
- (iv) Jurisdiction of OHE depots are as under:-

Depots	From		To	
SBDR	CPU (Excl)	142/2	CAR (Excl)	242/44
CAR	BH-“K” (Incl)	676/27-30	PRE/W (Incl)	720/23-24
MZP	PRE/W (Excl)	720/23-24	JIA/W (Incl)	763/3-4
MJA	JIA/W(Excl)	763/3-4	COI/E (Incl)	815/13-14
SRJ	Link Jn/E (Incl)	1345/35-36	MJHR/W (Incl)	1300/1-2
MKP	MJHR/W (Excl)	1300/1-2	MKP/W (Incl)	1254/15-16
SFG	COI/E (Excl)	815/13-14	SYWN/W(Incl)	847/31-32
	Link Jn/E (Incl)	1345/35-36		
SRO	SYWN/W(Excl)	847/31-32	SNIE/W (Incl)	915/17-18
FTP	SNIE/W (Excl)	915/17-18	KBN/E (Incl)	984/19-20
CNB	KBN/E (Excl)	984/19-20	PNK/E (Incl)	1027/23-24

RRH	PNK/E (Excl)	1027/23-24	JJK/W (Excl)	1081/27-28
PHD	JJK/W (Incl)	1081/27-28	BNT/W (Incl)	1137/25-26
ETW	BNT/W (Excl)	1137/25-26	KAA/W (Excl)	1202/11-12
TDL	KAA/W (Incl)	1202/11-12	BRN/E (Incl)	1262/5-6
HRS	BRN/E (Excl)	1262/5-6	MXK/W (Incl)	1313/1-2
ALJN	MXK/W (Excl)	1313/1-2	SOM/W (Incl)	1349/7-8, 7A
	ALJN/W (Incl)	1328/31A		
KRJ	SOM/W (Excl)	1349/7-8, 7A	WIR/W (Incl)	1388/27-28, 27A
DER	WIR/W (Excl)	1388/27-28, 27A	CPYZ/W (Incl)	1428/13-14, 13A

1.2 Assets :

RKM of OHE	980.52 (Incl CAR-CPU)
TKM of OHE	2732.204 (Incl CAR-CPU)
220 KV TR-Line	34.676 Km
132 KV TR-Line	799.551 Km
25 KV Tr- Line	16.65 Km

- **132 / 25 KV Traction sub stations**

There are twenty three 132 / 25 kV Traction sub-stations located at JEP, MZP, BEP,SRJ, NYN,MRE, SRO, RUB, MWH, SSL, PNK, RRH, PHD, BNT, ETW, BDN, SKB, MTI, HRS, MWUE, KRJ, DKDE, DBR out of which one TSS gets supply from MPPTCL, four traction sub-stations JEP, MZP, BEP & SRJ get 132 kV supply from UPPCL Grids , five traction sub-station from NYN to MWH get supply from 220 kV NYN/GSS and thirteen substations from SSL to DKDE get supply from NTPC through PHD & DER Grid.

For this there is 34.676 Km long 220 kV Transmission Line & 799.551 Km long 132kV TR-L.

- **220/132 kV grid sub-station**

There are three 220/132 KV Grid sub-station located at NYN, PHD & DER. 220 kV Supply is being taken from PGCIL Sarangapur, NTPC/Auriya & NTPC/Dadri to these three Grids.

- **25 kV Feeding post**

There are two 25 kV feeding post located at CAR & JIA gets supply from UPPCL.

- **Switching Post**

There are 60 nos. Switching posts

- i) **Sectioning Posts** - (29 Nos.)

SKGH/SP, CPU/SP, KHRY/SSP, ARW/SP, PRE/SP, BEO/SP, UND/SP, KCN/SP, LKJN/SP, BRG/SP, MKP/SP, BMU/SP, BRE/SP, KUW/SP, FYZ/SP, BKO/SP, CHK/SP, MTO/SP, JJK/SP, ULD/SP, EKL/SP, JGR/SP, KAA/SP, FZD/SP, CMR/SP, DAQ/SP, SOM/SP, CHL/SP, DER/SP

ii) Sub – Sectioning Post: (31 Nos.)

LUSA/SSP-II, LUSA/SSP-I, AGY/SSP, JEP/SSP, IDGJ/SSP, MFX/SSP, LOG/SSP, MJHR/SSP, KTDD/SSP, PNHI/SSP, PRYJ/SSP, SYWN/SSP, SJT/SSP, KGA/SSP, FTP/SSP, KBN/SSP, CNBI/SSP, CNB/SSP (E & W), PNK/SSP, BPU/SSP, AAP/SSP, BBL/SSP, MNR/SSP, TDL/SSP (E & W), PRA/SSP, SNS/SSP, ALJN/SSP, KLA/SSP, DAR/SSP

iii) Switching Station : One at ALJN

1.3 Major achievement & special works (February-2021)

SN	Name of Item	Target	Progress during the month	Cumulative
1	OHE works related to 160 KMPH (progress till 22.02.2021)			
a	Adjustment of Turnout & crossovers	900 nos.	13 nos.	583 nos.
b	Increase in tension in OHE	3275 nos. ATD	0	325 nos.
c	Droppers adjusted	1659 TKM	0	240.5 TKM
2	TR-line Insulator cleaning			
a	132 kV TR-L	24210 strings	2860 strings	22086 strings
b	220 kV TR-L	2058 strings	504 strings	2016 strings
3	Replacement of over aged battery set			
a	40 AH	On conditions basis	0	12 nos.
b	200 AH		0	02 nos.
c	300 AH		0	02 nos.
d	150AH		0	01 no.
e	180AH		0	01 no.
4	Packing saddle provided in single cantilever	3000 nos.	68 nos.	832 nos.
5	Replacement of rusty anti creep wire	150 locations	0	130 locations
6	Modified fitting for anti-falling arrangement of ATD (This will prevent ATD from falling down in case of breakage of ATD clevis. 173 no. provided in 2019-20)	140 nos.	30 nos.	149 nos.
7	Catenary wire splicing			
a	01 strand	On conditions basis	0	09
b	02 Strand		11	85
c	03 strand		8	89
d	04 Strand		6	68
e	05 Strand		1	36

f	07 Strand		0	04
g	08 Strand		0	01
	Total locations		26	292
8	Provision of contact wire in place of catenary wire under FOB-ROB			
a	FOB	30 nos.	03 no. (SFG)	17 nos
b	ROB		04 nos. (ETW)	18 nos

- a) OHE modification work due to DFCCIL infringement completed at JEP by M/s Mistilata.
- b) PTFE shifted with extra 650 m feeder wire at 971/12 at BKO DN line = 01 nos due to automatic signal provided by NCRPU.
- c) Critical Implantation relocated at location 1212/29 between MNR-FZD. OHE & ATD load shifted on new mast, tail feeder provided = 14.5m, old mast & safety mast cut.



- d) Transformer replaced by 25 KVA Auxiliary transformer at MJA station = 02 nos. This will enhance load catering capability.
- e) DN line Auxiliary transformer shifted 02 nos. at JEP station due to DFCCIL infringement.
- f) UP line Auxiliary transformer shifted on new location = 01 no. at BPU station.
- g) New Auxiliary transformer charged with NCRPU at location 968/15-16, 963/3-4, 960/13-14 = 06 nos.
- h) Overaged 03 nos. BM , 02 nos. 25 kV CB & 01 no. 132 kV CB replaced by construction at MTI/TSS.



- i) Aluminum cap provided in hole of operating handle of 132 kV SF (switch for feeding) at MRE/TSS & SRO/TSS = 16 nos. This will prevent cases of rats entering in the equipment.



- j) Surge monitor provided on Lightning arrester by construction department = 06 nos. at MTI/TSS.