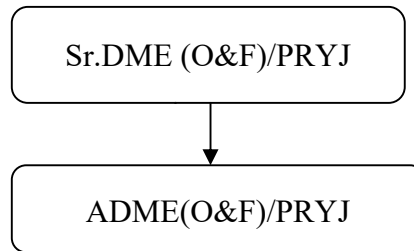


## **DIESEL LOCO OPERATION**

### **1.1 Gazetted Organizational Set up:-**



Power Branch is headed by Sr. DME (O&F) assisted by one ADME (O&F) for the entire activities of the organization. The activities are as below:-

Diesel Power utilization & safe operation, Crew Management, ART/ SPART/ ARMV/ SPARMV/Crane/Bulldozer Management, Electronic-In-Motion Weigh Bridge, Management of fueling installation, Running Room Management, Stores, Budget and Implementation of Recommendations of HLC Disaster management.

### **1.2 Staff position non-running mechanical O&F (as on 01.03.2021):-**

Group 'C'		Group 'D'		Total		Vac.	
S/S	O/R	S/S	O/R	S/S	O/R	C	D
149	76	153	141	302	217	73	12

### **1.3 Staff position running (LP,SLP & ALP) of Mechanical / O&F (as on 01.03.2021):-**

Shed	Mail/Exp Loco Pilot			Pass. Loco Pilot			Goods Loco Pilot			Shunter			Dsl Asstt. Loco Pilot			Total		
	Sanc	OR	Vac	Sanc	OR	Vac	Sanc	OR	Vac	Sanc	OR	Vac	Sanc	OR	Vac	Sanc	OR	Vac
<b>PCOI</b>	41	15	26	00	14	+14	61	46	15	09	11	+02	106	104	02	217	190	27
<b>PRYJ</b>	25	19	06	17	13	04	65	53	12	47	45	02	130	135	+05	284	265	19
<b>CNB</b>	19	10	09	09	10	+01	67	39	28	45	37	08	109	138	+29	249	234	15
<b>CPA</b>	00	02	+02	00	00	00	15	05	10	05	01	04	15	17	+02	35	25	10
<b>TDL</b>	09	09	00	25	18	07	43	23	20	19	11	08	81	75	06	177	136	41
<b>Total</b>	94	55	39	51	55	+04	251	166	85	125	105	20	441	449	-08	962	850	112

**1.4 Infrastructure:-**

<b>Power Controls</b>	<b>Crew Lobbies</b>	<b>RDIs</b>	<b>Running Rooms</b>
PRYJ	PCOI, PRYJ	PRYJ	PCOI,PRYJ,MKP
CNB	CPA	CNB	CPA
TDL		TDL	FKD

**1.5 ART/ARMVs:**

<b>ART</b>	<b>ARMV</b>	<b>SPARMV</b>	<b>SPART</b>	<b>Bulldozer</b>	<b>140T B. D. Crane</b>	<b>Tejas Bus</b>
PRYJ –B Class	-	PRYJ	-	-	-	PRYJ
CNB – A Class	-	-	CNB	CNB	CNB	
TDL - B Class	TDL	-		-	-	

**1.6 Performances:-**

<b>SN.</b>	<b>DESCRIPTION</b>	<b>Target (2020-21)</b>	<b>Actual in 2019-20</b>	<b>(As per financial year)</b>	
				<b>2019-20 (April to Feb)</b>	<b>2020-21 (April to Feb)</b>
<b>1.</b>	<b>DSL Loco Failure (Avg./month)</b>	6.5	7.3	7.6	1.2
<b>2.</b>	<b>POL (Avg./month)</b>	--	60.3	60.7	29.0
<b>3.</b>	<b>Dsl Loco Utilization in Goods Train (Per day)</b>	--	318.6	322.96	327.3

**17.7 Electronic In-Motion Weigh bridge**

<b>Sr.No.</b>	<b>station</b>	<b>Supplier</b>	<b>Max weighing Capacity</b>
<b>1.</b>	<b>Chunnar</b>	Digital Weighing System Pvt. Ltd.	140T
<b>2.</b>	<b>GMC</b>	Digital Weighing System Pvt. Ltd.	120T