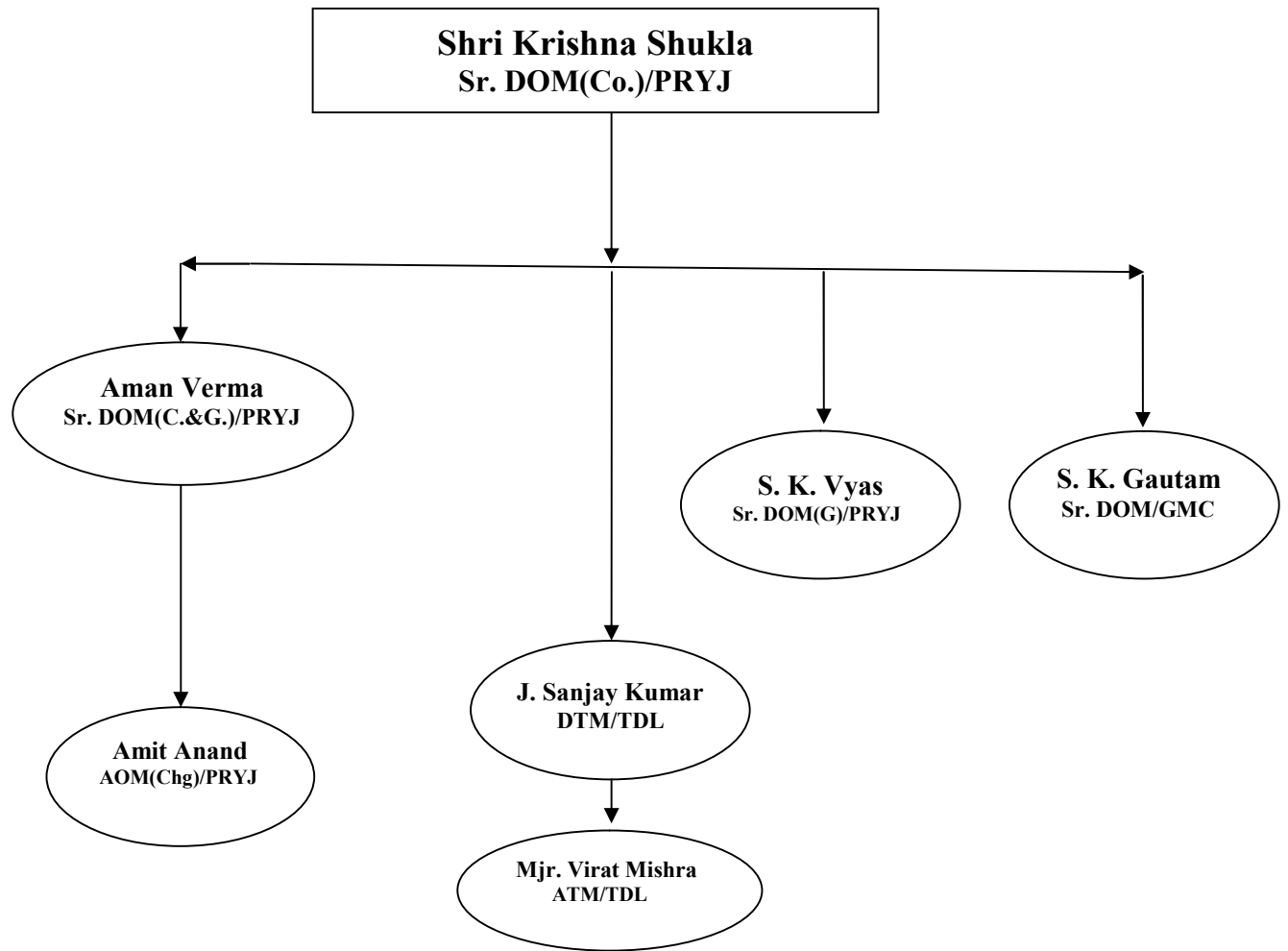


OPERATING



1.1 Staff position (As on 01.03.2021)

Category	Sanctioned Strength	Men on Roll	Vacancy	% Vacancy
Group 'C'	5467	3496	1971	36
* Group 'D'	494	571	+77	+16
Total	5961	4091	1851	32

* **Note :** Pointsman "A" (GP-1900) included in Group "C", SS-1583, MOR-1155, VAC-428 & % of Vacancy – 27%.

1.2 Coaching performance:-

Punctuality (%age)

Service	2018-19	2019-20 (April-Feb)	2020-21 (April-Feb)	%age
(DRNT, GBR, RAJ, SHT, SUF) M.R.Train	40.0	46.6	-	-
All Mail/Exp.	48.0	46.6	85.6	+83.7
Passenger	38.0	34.8	75.2	+116.1
All Services	44.0	42.2	84.2	+99.5

1.3 **Freight loading:-**

Revenue loading

Commodity	2018-19	2019-20 (April-Feb)	2020-21 (April-Feb)	Percentage
Container	261	248	259	+4.4
Food Grain	10	13	17	+30.6
Cement	51	40	28	-30.0
Fertilizer	24	34	30	-11.7
Stone	18	03	15	+400.0
Ballast	14	19	16	-15.8
Other	06	02	08	+300.0
Total	384	359	373	+3.9

PERFORMANCE:-

Items (wgns/day)		Target (2019-20)	2018-19	April-February		%age
				2019-20	2020-21	
Throughput	In Wagons	-	13035	12963	13090	+1.0
	In Train	-	256.9	258.6	268.7	+3.9
Revenue loading	In Wagons	-	384	359	373	+3.9
	In Million Tone	4.5	4.951	4.101	4.345	+5.9
Wagon Holding		11026	11731	11076	9537	+13.9
Wagon Turn Round		2.27 days	1.66	1.70	1.12	+34.1
Electric Loco utilization		400 Kms	400.5	435.2	432.0	-0.7
Diesel Loco utilization		300 Kms	259.7	323.0	327.3	+1.3
Punctuality Mail/Exp.		60.0%	41.0	46.6	85.6	+83.7
Terminal detention (Same day PM to release % age)		-	77.2	78.1	75.6	-3.2
Engg. Blocks (Hrs./day)		-	115'-40"	157'-12"	174'-53"	+11.3
Rocket trains		-	11.2	9.6	4.5	-53.1

Main Line - Total Stations = 98, B/H = 06

Branch Line- Total Stations = 31, B/H = 01

Sections Wise Details:-

Main Line				Branch Line			
Section	Distance	Stations	Block huts	Section	Distance	No. of Stations	No. of Block huts
DDU-PRYJ	152.89	20	1	HRS-HRF	9.02	01	-
PRYJ-CNB	193.0	31	4	CAR-CPU	102.77	06	01
CNB-TDL	228.76	25	-	ALJN-HGJ	13.32	02	-
TDL-GZB	183.84	22	2	SKB-FKD	106.29	05	-
				BRN-ETAH	58.77	02	-
				NYN-MKP	92.74	13	-
				ETW-MNQ	55.52	01	-
				CNB-CPA	2.42	01	-
Total		98	06		440.85	31	01

Flow of Traffic:-

UP direction -- Iron and Coal Rakes for Power House of Northern Region

DN direction -- Food Grain and Empties for Collieries.

Inward rakes of Clinker, Iron, Coal, Food grain and POL are received at CAR, NYN, SFG, FTP, CNBI, CPC, JUHI, PNK, ETW, HGJ, ALJN and DER.

Outward traffic of Food Grain is from CPC, MNQ, ETAH, Containers at DER, GMC, PNK, KRJ, Stone from SKGH, LUSA, CAR, NYN, and Cement from J. P. Associates CAR.

Interchange Points (Avg. / day February-2021)

There are 18 interchange points:-

I/C Point	Rly	T/O	M/O	I/C Point	Rly	T/O	M/O
CAR-CPU	EC	9.9	7.5	GZB-TDL	NR	22.6	19.8
MGS-ALD	EC	38.1	43.9	LK O-ALD	NR	0.6	2.9
AGRA-TDL	NC	16.4	14.6	LKO-GMC	NR	14.2	20.9
JBP-MKP	NC	16.1	17.5	VYN-JEP	NR	3.0	3.3
JHS-GMC	NC	16.9	12.4	MB-HGJ	NR	0.8	1.4
NER-ALD	NE	7.2	2.1	MB-KRJ	NR	3.8	2.5
CPA-GMC	NE	9.9	7.5	ETW-BHIND	NC	3.2	2.0
MKP-BANDA	NC	0.2	0.7	EDFC-BDN	NC	13.6	8.6
IZN-FKD	NE	0.3	1.0	EDFC-KRJ	NC	6.5	10.1

Performance (April-February-2021):-

S.N.	Items (Avg. per day)	Target	Achievement		% var.
			2019-20	2020-21	
1	Throughput of Wagons	-	12963	13090	+1.0
2	Throughput of Trains	-	258.6	268.7	+3.9
3	Revenue loading (Wgn/Day)	-	359	373	+3.9
4	Wagon holding	11026	11076	9537	+13.9
5	Wagon Turn Round	2.27 days	1.70	1.12	+34.1
5	Electric loco utilization	400 Kms	435.2	432.0	-0.7
6	Diesel loco utilization	300 Kms	323.0	327.3	+1.3
7	Punctuality Mail/Exp.(%age)	60.0%	46.6	85.6	+83.7
8	Mail Exp ran per day	-	226.4	86.7	-61.7
9	Terminal detention (Same day P/M to Rele %)	-	78.1	75.6	-3.2
10	Speed-MGS-GZB (Up)	30 Km	21.1	43.2	+104.7
	GZB-MGS (Dn)	35 Km	25.0	44.3	+77.2
11	Engg Block Granted (Hrs per Day)	-	157'-12"	174'-53"	11.3