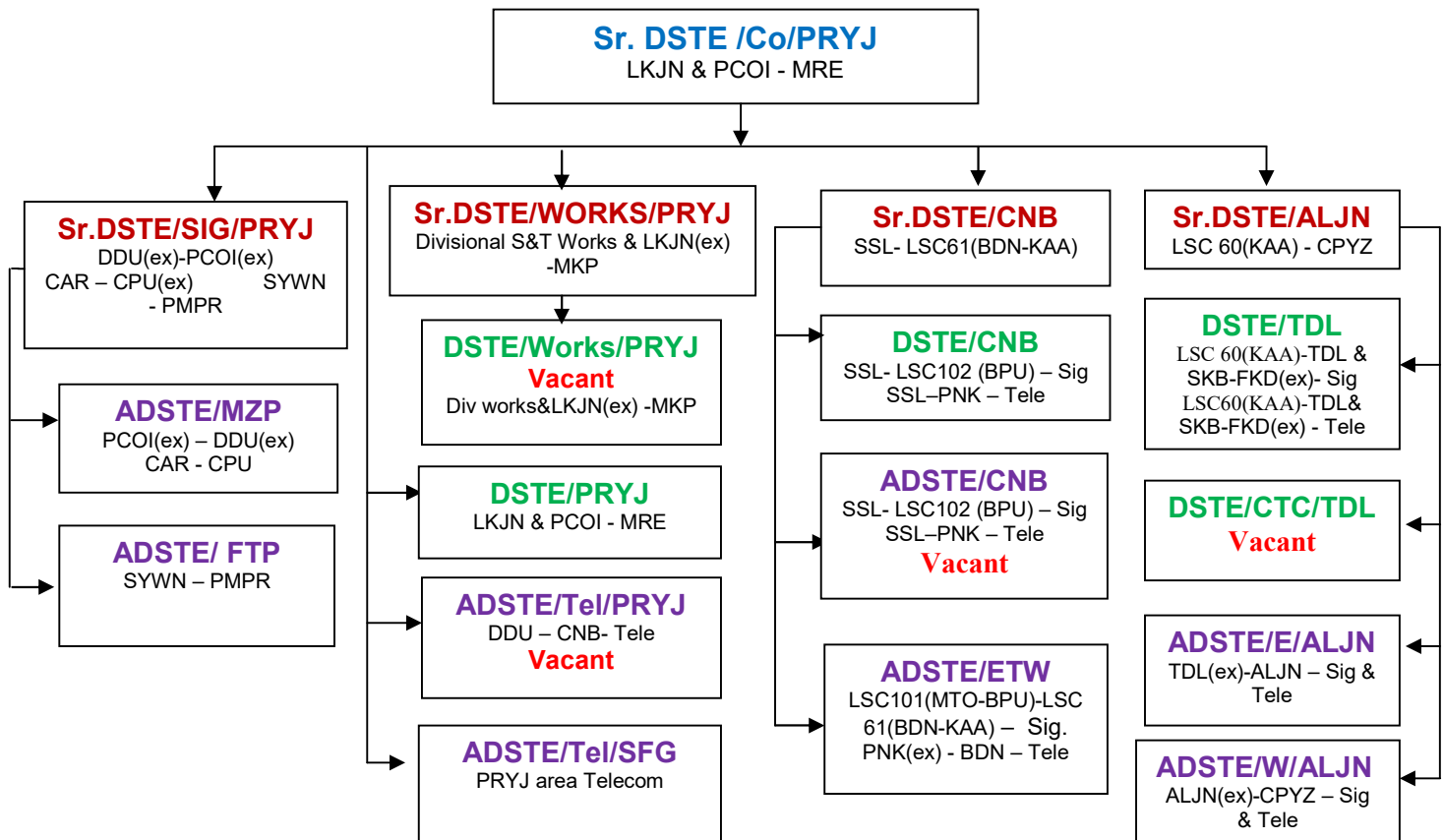


Signal & Telecommunication

ORGANISATION

The S&T Branch is headed by Sr.DSTE/Co, headquartered at Prayagraj who is assisted by four Sr.DSTEs, two each at Prayagraj, one each at Kanpur & Aligarh, 03 DSTEs, 01 each at Prayagraj Kanpur & Tundla and 06 ADSTEs, 01 each at Mirzapur, Prayagraj, Fatehpur & Etawah, & 02 at Aligarh.

ORGANISATION CHART



1.1 S&T Installations:

(A) Signaling system:

(i) Type of Interlocking:

Route	Section	RRI	Panel	EI	Block Hut	Electro-mech.	Mechanical	Signaling	No. of Stations
A	GZB- DDU	02 (PRYJ, CNB)	01 (KSQ)	96	4	01 (GMC 'A' & 'B' Cabins)	-	MACLS	104
B	MKP-LKJN	-	03	10	-	-	-	MACLS	13
B	CNB-CPA	-	01 (CPA)	-	-	-	-	MACLS	01
E	CAR-CPU	-	-	-	1 (BH-R)	06	-	MACLS	07
E	SKB- FKD	-	01 (MNQ)	2 (MOTA & KOZ)	-	02 (BGQ, NBUE)	-	MACLS	05
E	MNQ-ETW	-	01 (KAHL)	-	-	-	-	MACLS	01
E	ALJN-HGJ	-	02 (HGJ, MZGI)	-	-	-	-	MACLS	02
E	ETH-BRN	-	-	-	-	-	02 (JSC, ETH)	Mod. N/I	02
E	HRS- HRF	-	-	-	-	-	01 (HRF)	No Signalling	01

(B) Telecommunication:

i) Control Communication

S.No.	Route	Control Section	Communication Media
1	A	DDU - PRYJ	On Railway Owned OFC
2	E	CAR-CPU	Rly owned 6 Quad cable
3	A	KCN-MRE (Area CNL)	On Railway Owned OFC
4	A	PRYJ-CNB	On Railway Owned OFC
5	A	SSL – RRH (Area CNL)	On Railway Owned OFC
6	A	RRH-SKB (Incl. ETW Branch)	On Railway Owned OFC
7	A	SKB-SNS (Area CNL)	On Railway Owned OFC
8	E	SKB-FKD (Area CNL of SKB-SNS)	Railway owned U/G 6 Quad Cable
9	A	SNS – GZB	On Railway Owned OFC
10	B	PRYJ-NYN-MKP	On Railway Owned OFC
11	E	ALJN - HGJ	Railway owned 6 Quad Cable.
12	E	ETH - BRN	Non-Controlled

1.2 Performance – Signal

S.No.	I T E M	TARGET (2020-21)	Actuals (Upto Feb)		Variation
			2019-20	2020-21	
1	Signal Failures	4846	4763	3604	(+) 24.33%
2	Signal Failures attributed to S&T	2412	2320	1888	(+) 18.62%
3	Overhauling of signaling gears.				
	a) Lever frames	100% due(5)	7	5	
	b) Block Instt.	100% due (6)	26	21	
	c) Relays	100% due(1500)	2511	2472	
4	Station Inspection F/P Inspection	100% due 100% due	100% 88%	76.12% 12.22%	(-)23.88% (-) 85.08%

1.3 PERFORMANCE – TELECOM

S.No.	I T E M	TARGET (2020-21)	Actuals (Upto Feb)		Variation
			2019-20	2020-21	
5.	Efficiency of Railway owned CNL circuits				
	a) RE/Q Cable	99%	99.24%	99.81%	(+) 0.57 %
	b) OFC	100%	99.90%	99.85%	(+) 0.05 %
6.	Efficiency of DOT owned CNL circuits	--	--	--	
7.	Training - Refresher	Actual due (2020-21)	Done Up to Feb '2020	Done Up to Feb '2021	
	a) SSE/JE/Sig	32	41	35	
	b) SM	65	61	162	
	C) SSE/JE/Tel	19	07	17	
	d) TCM	32	39	31	

Man Power

Staff	Current DESU/DETU	No of Staff Sanction	Vacancy
SIGNAL	2203330.89	1936	481
TELECOM	646854.40	724	166

Challenges

Area of Concern	
Comments on health infrastructure	<p>1. Old and worn out mechanical signaling equipment as lever frames needs to be replaced on 'A' route i.e. GMC A & B cabin for replacement. Tenders are awarded & work in progress.</p> <p>2. Old and worn out mechanical signaling equipments as lever frames also needs to be replaced on 'E' route i.e. in</p> <ul style="list-style-type: none"> ➤ Chunar – Chopan section, ➤ Shikohabad – Farrukhabad (BGQ & NBUE) & ➤ Barhan – Etah section. <p>Tender awarded for (SKB – FBD) & (BRN-ETH) sections. MOTA & KOZ commissioned.</p>

Assistance Required

From Rly Board -

- I. Due to Automatic signalling, Illrd line & additional modern signalling equipment, additional signalling staff is required as per Railway Board's Norms. One-time financial neutrality is required for its creation i.e. for additional system.

From HQ -

- I. Current status of Staff in Prayagraj Division –

Description	Sanction Post	On Roll	Vacancy
Over all	2660	2013	647
SSE/Sig	107	98	09
SSE/Tele	72	70	2
JE/Sig	175	97	78
JE/Tele	36	27	09
Technician/Sig	725	505	220
Tech/Tele	252	195	57
Helper/Sig	828	692	136
Helper/Tele	321	242	79

- II. Two JS/SS officers are required to be posted in PRYJ Division.