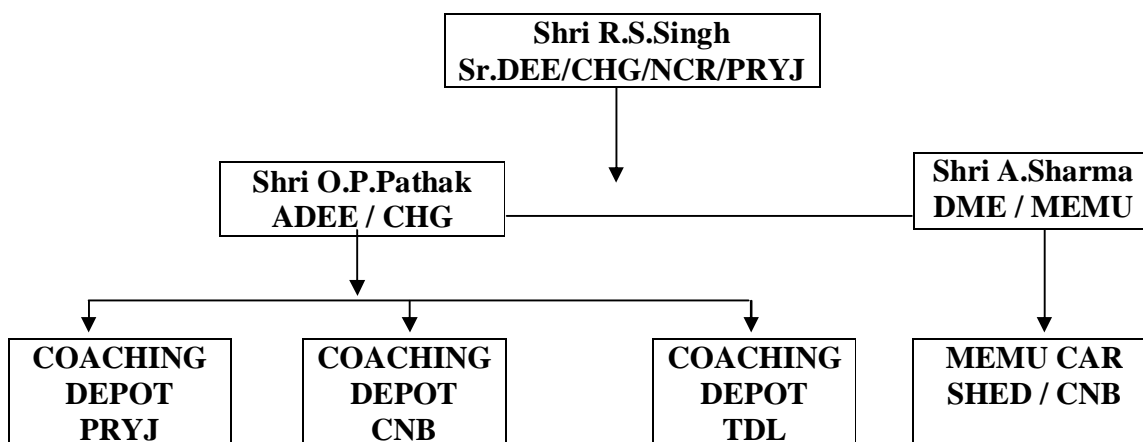


ELECTRICAL COACHING

Organization chart



Department of Electrical (Coaching) has come into existence w.e.f. 17.09.2010 in PRYJ division to monitor and controlling of performance of the coaching services of entire division. Sr. DEE (Coaching) with assistance of an ADEE (coaching) is looking after the operation and performance of division. At present PRYJ division has three coaching depots, two major depots at PRYJ and CNB and one minor depot at TDL. Collectively these depots primarily maintain 200 AC coaches , 373 TL coaches of 27 different rakes and about 01 rake of MEMU over the division. Also, secondary maintenance of 24 AC coaches and 55 TL coaches is also performed.

Man Power Position (TL-AC & MEMU)

Category	TL			AC/ACC			MEMU			TOTAL		
	S/S	O/R	V	S/S	O/R	V	S/S	O/R	V	S/S	O/R	V
Sr.Tech	48	42	-06	19	16	-03	18	-	-18	85	58	-27
Tech.-I	106	64	-42	45	45	00	19	-	-19	170	109	-61
Tech.-II	13	12	-01	03	00	-03	10	09	-01	26	21	-05
Tech.-III	22	50	+28	02	14	+12	11	09	-02	35	73	+38
App. Tech	-	28	+28	-	01	+01	-	-	-	-	29	+29
Helper	111	113	+02	29	60	+31	30	14	-16	170	187	+17
TOTAL	300	309	+09	98	136	+38	88	32	-56	486	477	-09

Category	TL			AC/ACC			MEMU			TOTAL		
	S/S	O/R	V	S/S	O/R	V	S/S	O/R	V	S/S	O/R	V
SSE	09	07	-02	06	07	+01	04	04	00	19	18	-01
JE	10	01	-09	04	02	-02	04	-	-04	18	03	-15
TOTAL	19	08	-11	10	09	-01	08	04	-04	37	21	-16

Holding of assets in electric (Coaching) department is as follows.

S N	ITEMS	PRYJ Div
1	No. of primary rakes	27
2	No. of secondary/STR rakes	07
3	No. of TL Primary coaches	373
4	No. of MEMU rakes	19
5	No. of primary MEMU rakes	01
6	No. of TL Secondary coaches	55
7	No. of AC Primary coaches	173
8	No. of AC Secondary coaches	24
9	No. of power cars	27

Performance:

S. N.	Parameters	Target 2019-20	Progress upto April 21
	TL & AC COACHING		
1	Territorial failure of AC coaches leading to certified non-AC	-	NIL
a	Owning Railway	0	0
b	Foreign Railway	0	0
2	Detachment of AC/TL coaches on en-route on ETL account	0	NIL
3	Equipment isolation on coaches.	0	NIL
4	Territorial TL & AC failures leading to punctuality loss in NCR		
	Territorial Basis (i)- Cases	30	02
	(ii)- trains	50	17
5	Ineffective % of AC coaches (*RB's Target 2%)	-	1.00
6	Ineffective % of TL coaches (*RB's Target 0.8%)	-	0.08