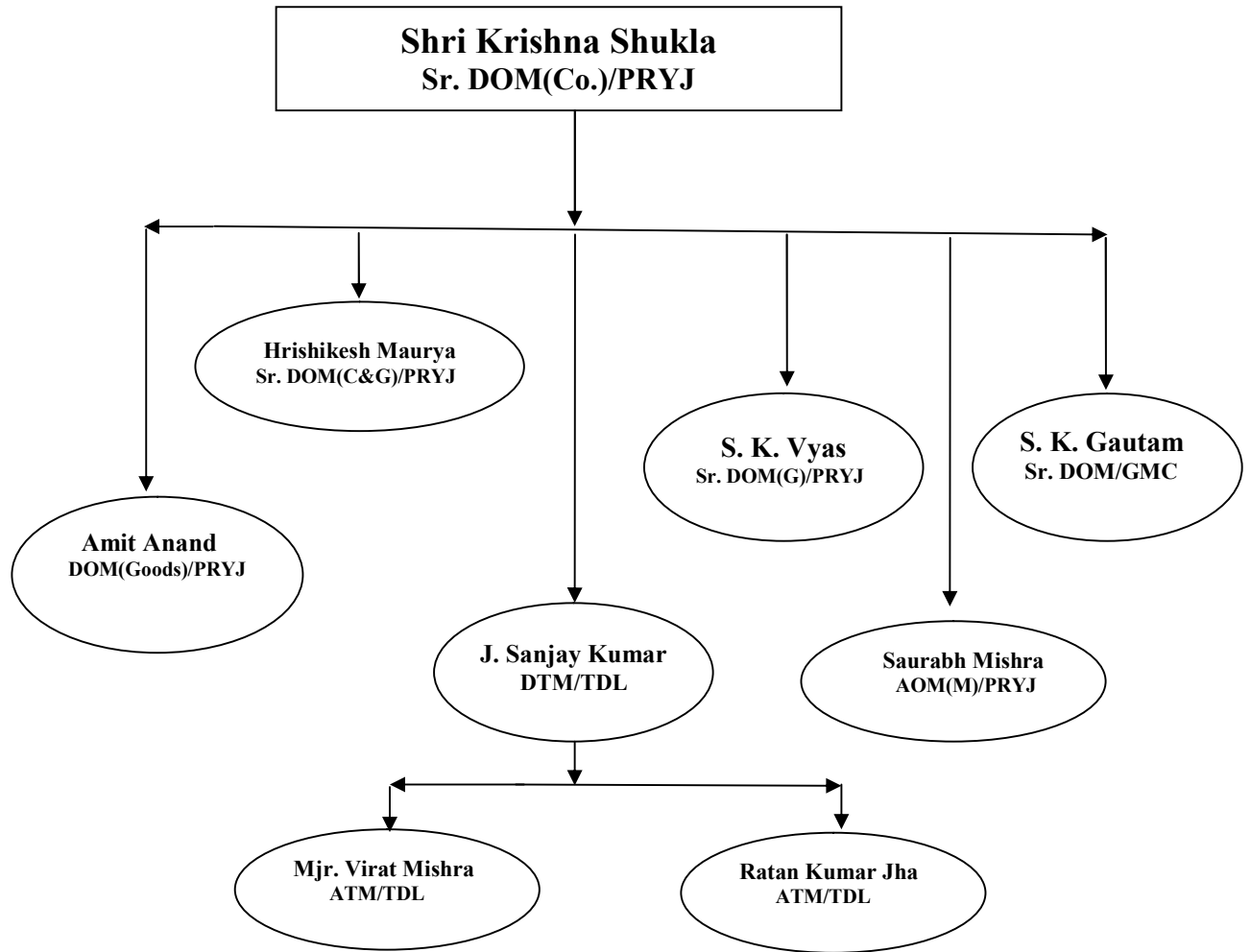


Organization Chart of Operating Department



3. OPERATING

3.1 Staff position (As on 01.07.2021)

Category	Sanctioned Strength	Men on Roll	Vacancy	% Vacancy
Group 'C'	5425	3437	1988	37.0
* Group 'D'	484	576	+92	+19.0
Total	5909	4013	1896	32.0

* **Note :** Pointsman "A" (GP-1900) included in Group "C", SS-1583, MOR-1131, VAC-452 & % of Vacancy – 29%.

3.2 Coaching performance:-

Punctuality (%age)

Service	2019-20	2020-21 April-June	2021-22 April-June	%age
(DRNT, GBR, RAJ, SHT, SUF) M.R.Train	46.6	-	-	-
All Mail/Exp.	46.8	85.3	91.7	+7.5
Passenger	34.9	-	86.1	-
All Services	42.4	85.3	90.1	+5.6

3.3 Freight loading:-

Revenue loading

Commodity	2019-20	2020-21 April-June	2021-22 April-June	Percentage
Container	244	167	285	+29.5
Food Grain	12	11	18	+63.6
Cement	40	16	56	+250.0
Fertilizer	31	25	24	-4.0
Stone	03	17	19	+11.7
Ballast	19	07	14	+100.0
Other	04	08	05	-37.5
Total	353	251	421	+67.7

PERFORMANCE:-

Items (wgons/day)		Target (2019-20)	2019-20	April-June		%age
				2020-21	2021-21	
Throughput	In Wagons	-	12897	8306	17537	+111.1
	In Train	-	257.4	170.3	349.3	+105.1
Revenue loading	In Wagons	-	353	251	421	+67.7
	In Million Tone	5.94	4.405	0.805	1.365	+69.6
Wagon Holding		12000	11028	8288	10215	-23.3
Wagon Turn Round		2.45 days	1.70	1.23	0.98	+20.3
Electric Loco utilization		450Kms	432.9	512.4	423.9	-17.3
Diesel Loco utilization		320Kms	318.6	369.0	366.9	-0.6
Punctuality Mail/Exp.		60.0%	46.8	85.3	91.7	+7.5
Terminal detention (Same day PM to release % age)		-	77.2	65.3	81.7	+25.1
Engg. Blocks (Hrs./day)		-	154'-02"	134'-44"	134'-59"	+0.2
Rocket trains		-	9.2	0.5	304	+580.0

Main Line - Total Stations = 98, B/H = 06

Branch Line- Total Stations = 31, B/H = 01

Sections Wise Details:-

Main Line				Branch Line			
Section	Distance	Stations	Block huts	Section	Distance	No. of Stations	No. of Block huts
DDU-PRYJ	152.89	20	1	HRS-HRF	9.02	01	-
PRYJ-CNB	193.0	31	4	CAR-CPU	102.77	06	01
CNB-TDL	228.76	25	-	ALJN-HGJ	13.32	02	-
TDL-GZB	183.84	22	2	SKB-FKD	106.29	05	-
				BRN-ETAH	58.77	02	-
				NYN-MKP	92.74	13	-
				ETW-MNQ	55.52	01	-
				CNB-CPA	2.42	01	-
Total		98	06		440.85	31	01

Flow of Traffic:-

UP direction -- Iron and Coal Rakes for Power House of Northern Region

DN direction -- Food Grain and Empties for Collieries.

Inward rakes of Clinker, Iron, Coal, Food grain and POL are received at CAR, NYN, SFG, FTP, CNBI, CPC, JUHI, PNK, ETW, HGJ, ALJN and DER.

Outward traffic of Food Grain is from CPC, MNQ, ETAH, Containers at DER, GMC, PNK, KRJ, Stone from SKGH, LUSA, CAR, NYN, and Cement from J. P. Associates CAR.

Interchange Points (Avg. / day June-2021)

There are 18 interchange points:-

I/C Point	Rly	T/O	M/O	I/C Point	Rly	T/O	M/O
CAR-CPU	EC	11.0	8.9	GZB-TDL	NR	20.8	20.0
MGS-ALD	EC	31.0	34.9	LK O-ALD	NR	0.8	2.6
AGRA-TDL	NC	12.2	10.2	LKO-GMC	NR	11.5	16.4
JBP-MKP	NC	13.4	16.4	VYN-JEP	NR	2.3	2.8
JHS-GMC	NC	17.1	11.8	MB-HGJ	NR	0.8	1.8
NER-ALD	NE	6.7	2.1	MB-KRJ	NR	3.8	2.9
CPA-GMC	NE	1.9	4.5	ETW-BHIND	NC	2.3	1.6
MKP-BANDA	NC	0.2	1.2	EDFC-BDN	NC	20.3	13.8
IZN-FKD	NE	0.5	1.0	EDFC-KRJ	NC	9.5	13.3

Performance (April-June-2021):-

S.N.	Items (Avg. per day)	Target	Achievement		% var.
			2020-21	2021-22	
1	Throughput of Wagons	-	8306	17537	+111.1
2	Throughput of Trains	-	170.3	349.3	+105.1
3	Revenue loading (Wgn/Day)	-	0.805	1.365	+69.6
4	Wagon holding	12000	8288	10215	-23.3
5	Wagon Turn Round	2.45days	1.23	0.98	+20.3
5	Electric loco utilization	450 Kms	512.4	423.9	-17.3
6	Diesel loco utilization	320 Kms	369.0	366.9	-0.6
7	Punctuality Mail/Exp.(%age)	60.0%	85.3	91.7	+7.5
8	Mail Exp ran per day	-	20.8	160.3	+670.6
9	Terminal detention (Same day P/M to Rele %)	-	65.3	81.7	+25.1
10	Speed-MGS-GZB (Up)	30 Km	42.0	41.0	-2.4
	GZB-MGS (Dn)	35 Km	41.9	44.7	+6.7
11	Engg Block Granted (Hrs per Day)	-	134'-44"	134'-59"	+0.2