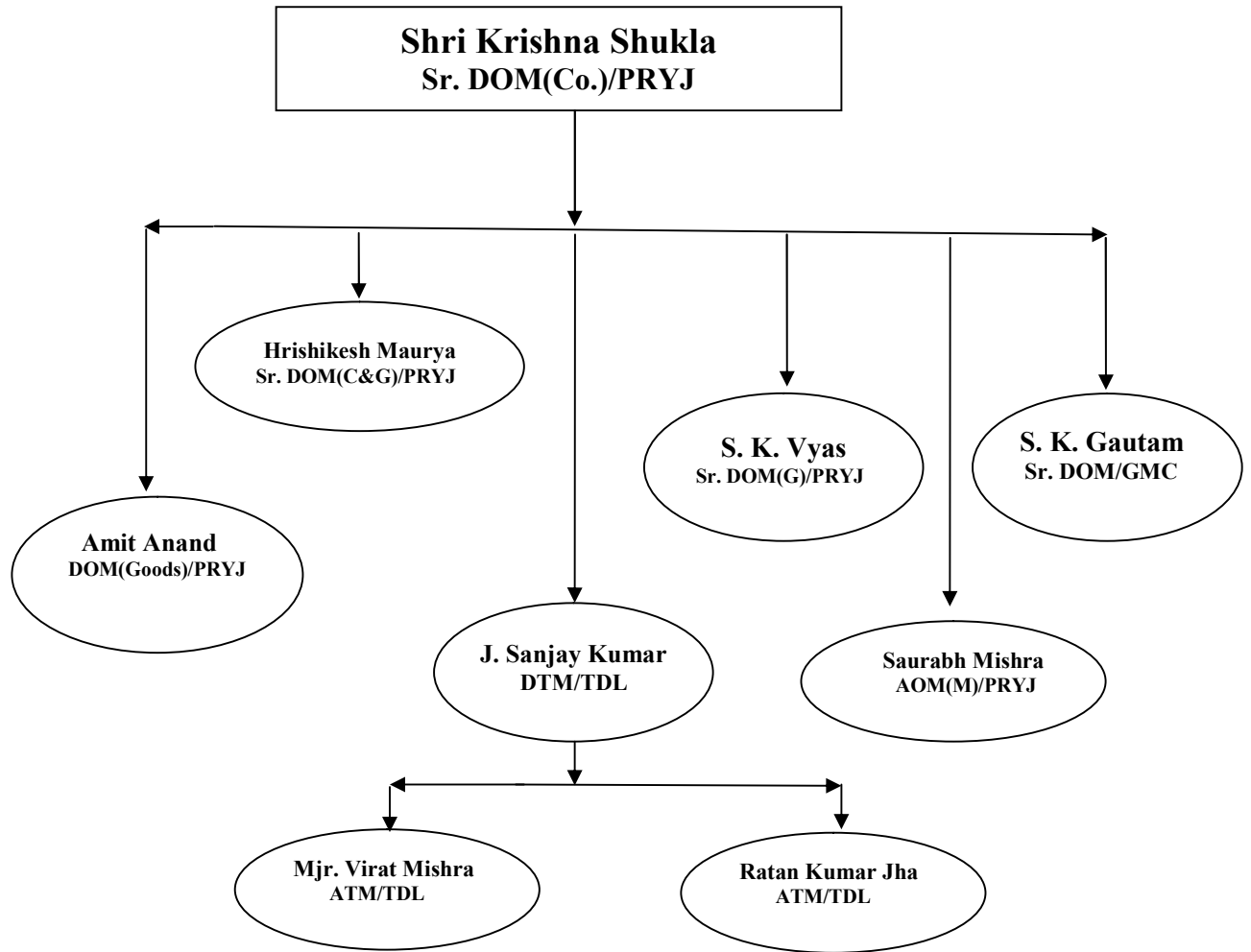


Organization Chart of Operating Department



3. OPERATING

3.1 Staff position (As on 01.09.2021)

Category	Sanctioned Strength	Men on Roll	Vacancy	% Vacancy
Group 'C'	5425	3441	1884	35.0
* Group 'D'	484	456	+28	+6.0
Total	5909	3997	1912	32.0

* **Note :** Pointsman "A" (GP-1900) included in Group "C", SS-1583, MOR-1261, VAC-322 & % of Vacancy – 20%.

3.2 Coaching performance:-

Punctuality (%age)

Service	2019-20	2020-21 April-August	2021-22 April-August	%age
(DRNT, GBR, RAJ, SHT, SUF) M.R.Train	46.6	-	-	-
All Mail/Exp.	46.8	92.8	90.8	-2.1
Passenger	34.9	-	88.9	-
All Services	42.4	92.8	88.9	-4.2

3.3 Freight loading:-

Revenue loading

Commodity	2019-20	2020-21 April-August	2021-22 April-August	Percentage
Container	244	212	291	+37.2
Food Grain	12	10	24	+140.0
Cement	40	16	49	+206.2
Fertilizer	31	30	27	-10.0
Stone	03	13	16	+23.0
Ballast	19	13	17	+30.7
Other	04	07	07	-
Total	353	301	431	+43.1

PERFORMANCE:-

Items (wgons/day)		Target (2019-20)	2019-20	April-August		%age
				2020-21	2021-21	
Throughput	In Wagons	-	12897	9917	16925	+70.7
	In Train	-	257.4	204.3	339.8	+66.3
Revenue loading	In Wagons	-	353	301	431	+43.1
	In Million Tone	5.94	4.405	1.603	2.336	+45.7
Wagon Holding		12000	11028	8586	10342	-20.5
Wagon Turn Round		2.45 days	1.70	1.12	0.96	+14.3
Electric Loco utilization		450Kms	432.9	472.1	420.9	-10.8
Diesel Loco utilization		320Kms	318.6	345.7	382.5	+10.6
Punctuality Mail/Exp.		60.0%	46.8	92.8	90.8	-2.2
Terminal detention (Same day PM to release % age)		-	77.2	69.7	81.3	+16.6
Engg. Blocks (Hrs./day)		-	154'-02''	164'-11''	157'-34''	-4.0
Rocket trains		-	9.2	1.4	3.1	+121.4

Main Line - Total Stations = 98, B/H = 06

Branch Line- Total Stations = 31, B/H = 01

Sections Wise Details:-

Main Line				Branch Line			
Section	Distance	Stations	Block huts	Section	Distance	No. of Stations	No. of Block huts
DDU-PRYJ	152.89	20	1	HRS-HRF	9.02	01	-
PRYJ-CNB	193.0	31	4	CAR-CPU	102.77	06	01
CNB-TDL	228.76	25	-	ALJN-HGJ	13.32	02	-
TDL-GZB	183.84	22	2	SKB-FKD	106.29	05	-
				BRN-ETAH	58.77	02	-
				NYN-MKP	92.74	13	-
				ETW-MNQ	55.52	01	-
				CNB-CPA	2.42	01	-
Total		98	06		440.85	31	01

Flow of Traffic:-

UP direction -- Iron and Coal Rakes for Power House of Northern Region

DN direction -- Food Grain and Empties for Collieries.

Inward rakes of Clinker, Iron, Coal, Food grain and POL are received at CAR, NYN, SFG, FTP, CNBI, CPC, JUHI, PNK, ETW, HGJ, ALJN and DER.

Outward traffic of Food Grain is from CPC, MNQ, ETAH, Containers at DER, GMC, PNK, KRJ, Stone from SKGH, LUSA, CAR, NYN, and Cement from J. P. Associates CAR.

Interchange Points (Avg. / day August-2021)

There are 18 interchange points:-

I/C Point	Rly	T/O	M/O	I/C Point	Rly	T/O	M/O
CAR-CPU	EC	9.1	7.4	GZB-TDL	NR	18.1	18.4
DDU-PRYJ	EC	32.7	35.9	LK O-ALD	NR	0.7	3.7
AGRA-TDL	NC	15.8	12.3	LKO-GMC	NR	11.6	16.4
JBP-MKP	NC	15.5	15.4	VYN-JEP	NR	1.9	3.4
JHS-GMC	NC	14.3	13.0	MB-HGJ	NR	1.4	1.9
PRRB-PRYJ	NE	6.0	1.5	MB-KRJ	NR	5.3	2.6
CPA-GMC	NE	3.0	5.7	ETW-BHIND	NC	3.1	2.1
MKP-BANDA	NC	0.2	0.4	EDFC-BDN	NC	15.8	10.5
IZN-FBD	NE	0.5	1.0	EDFC-KRJ	NC	7.2	8.6

Performance (April-August-2021):-

S.N.	Items (Avg. per day)	Target	Achievement		% var.
			2020-21	2021-22	
1	Throughput of Wagons	-	9917	16925	+70.7
2	Throughput of Trains	-	204.3	339.8	+66.3
3	Revenue loading (Wgn/Day)	-	1.603	2.336	+45.7
4	Wagon holding	12000	8586	10342	-20.5
5	Wagon Turn Round	2.45days	1.12	0.96	+14.3
5	Electric loco utilization	450 Kms	472.1	420.9	-10.8
6	Diesel loco utilization	320 Kms	345.7	382.5	+10.6
7	Punctuality Mail/Exp.(%age)	60.0%	92.8	90.8	-2.2
8	Mail Exp ran per day	-	38.3	171.7	+348.3
9	Terminal detention (Same day P/M to Rele %)	-	69.7	81.3	+16.6
10	Speed-MGS-GZB (Up)	30 Km	44.7	41.7	-6.7
	GZB-MGS (Dn)	35 Km	44.1	45.1	+2.3
11	Engg Block Granted (Hrs per Day)	-	164'-11''	157-'34''	-4.0