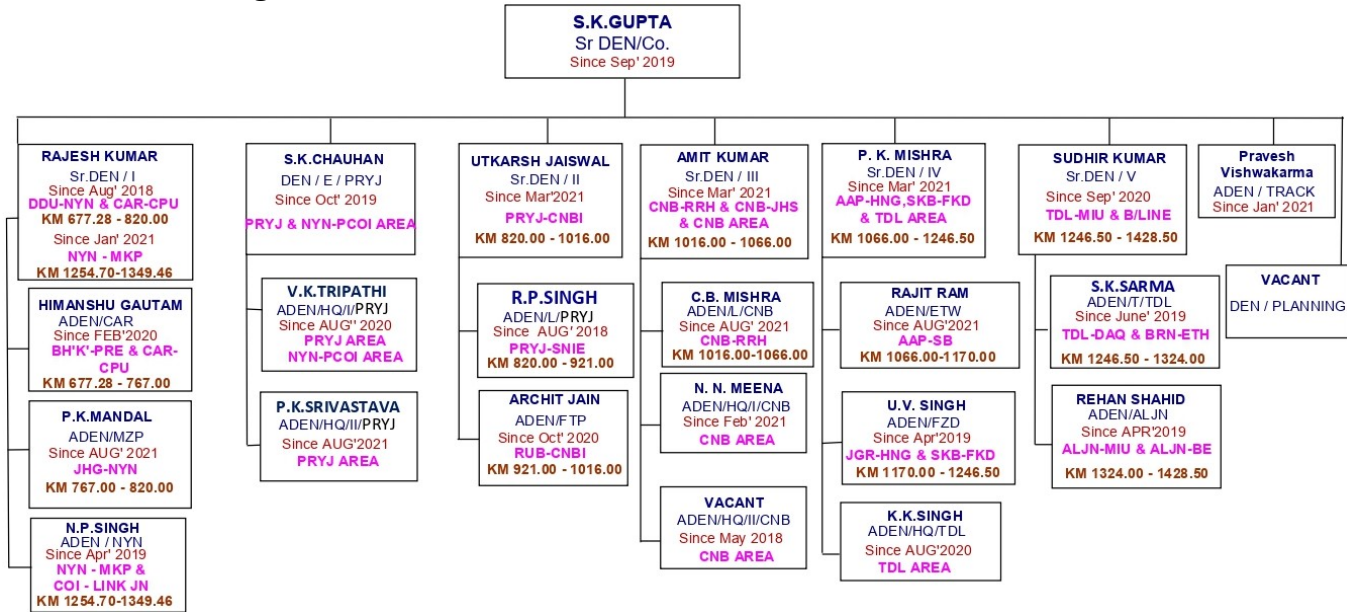


1.0 ENGINEERING

1.1 Organization



1.2 STAFF STRENGTH AND VACANCY POSITION:

Branch	Category	Sanctioned strength	Men on roll	Vacancies	% of Vacancies against Sanctioned Strength	% of Staff against Sanctioned Strength
P. Way	SSE/P-Way	265	212	53	20.0	80.0
	JE/P-Way	141	49	92	65.2	34.8
	Track Maintainer-I	715	369	346	48.4	51.6
	Track Maintainer-II	1430	1171	259	18.1	81.9
	Track Maintainer-III	1430	1498	-68	-4.8	104.8
	Track Maintainer-IV	3573	2489	1084	30.3	69.7
Works	SSE/Works	68	56	12	17.6	82.4
	JE/ Works	33	2	31	93.9	6.1
Total		7655	5846	1809	23.6	76.4
Bridge	BRIs	Concerned to Bridge Org.				
Ministerial	Clerks Drafts Men Typists Stenographers	Concerned to Personnel Deptt.				

1.3 BRIDGES:

Section	Important	Major	Minor	ROB
DDU-GZB (M/L)	4	84	1592	76
Branch Line	1	71	918	17

IMPORTANT BRIDGES:

S.No.	Bridge No.	Location	Section	No. of Span	Span	Type of Bridge
1	5 UP	792/9-23	MGS-PRYJ	7.2 X 2	45.7 , 9.75&14.64	RIVT PG
2	5 DN	792/24-10		7 X 2	45.7 & 16.60	RIVT PG
3	30 UP	821/0-822/0		14 .2 X 1	61.0,8.84 & 9.14	RIVT PG
4	30 DN	821/0-822/0		14 .2 X 1	61.0,8.84 & 9.14	RIVT PG
5	399	143/2-144/5	CAR-CPU	2 X14	30.5 & 26.2	RIVT PG

1.4 CURVES:

S.No.	Description of Curve	MGS-GZB M/L	Branch lines
1	Curve < 0.5 degree	293	01
2	Curve \geq 0.5 <1 degree	187	17
3	Curve \geq 1 degree	35	67

1.5 TRACK UTILISATION-SECTION WISE GMT:

Section	UP M/L		DN M/L	
	2019-20	2020-21	2019-20	2020-21
DDU-PRYJ	65.83	60.76	47.81	43.99
PRYJ-CNB	66.75	57.43	49.72	38.35
CNB-TDL	65.44	49.32	55.94	36.81
TDL-GZB	45.81	38.11	42.28	28.78

1.6 PROGRESS OF IMPORTANT WORKS:

S. No.	Items	Target for 2021-22	Cumulative Progress upto Oct-21	Cumulative Progress upto Oct-20	Comparative performance w.r.t last year Prog. in %
1	Track Renewal (CTR Unit)	186.5	84.27	79.83	106
2	Ballasting (Thou.Cum.)	200	126.60	114.78	110
3	Deep Screening (Km)	240	61.76	91.62	67
4	Scrap Disposal (MT)	25000	5257	3810	138
	Rail	21500	3164	2948	107
	C.I	1000	0	0	-
	Other	2500	2093	862	-
	Works	-	-	-	-
5	Improved SEJ(Nos)	117	111	135	82
6	Laying of Glued Joints (Nos)	0	1120	842	133
7	Laying of Fan Shaped Turnouts (Sets) Eff.	200.75	143.69	79.06	182
8	Accident on Engineering Account	-	0	0	-
9	Rail/Weld Fracture (Nos)	-	9	4	-
10	Tamping (Km.) HOT	1430	1142.63	1005.43	114
11	USFD(Km.)	19208	11130	11770	95
12	Channel Sleeper(Nos.)	0	0	0	-