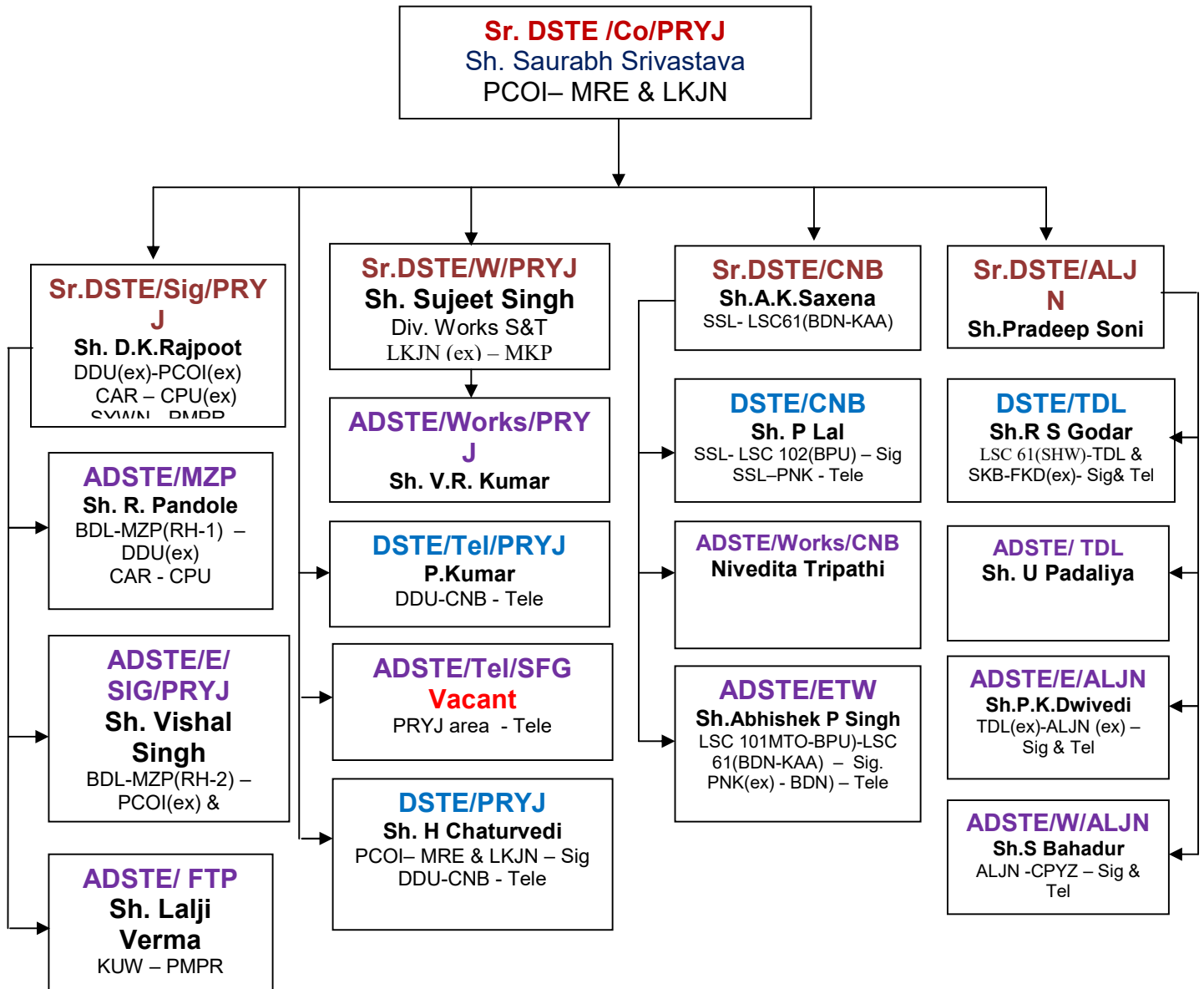


9.0 Signal & Telecommunication

The S&T Branch is headed by Sr.DSTE/Co, headquartered at Prayagraj who is assisted by four Sr.DSTEs (02 at Prayagraj, 01 each at Kanpur & Aligarh), 04 DSTEs (02 at Prayagraj, 01 each at Kanpur & 01 Tundla) and 09 ADSTEs, (02 at Prayagraj, 01 each at Mirzapur, Prayagraj, Fatehpur, Kanpur, Etawah & Tundla & 02 at Aligarh).

ORGANISATION CHART



9.1 S&T Installations:

(A) Signaling system:

(i) Type of Interlocking:

Route	Section	RRI	Panel	EI	Block Hut	Electro-mech.	Mechanical	Interlocking	Signaling	No. of Stations
A	GZB- DDU	02	01	96	3	01	-	IIIR	MACLS	103
B	MKP-LKJN	-	03	10	-	-	-	IIR	MACLS	13
B	CNB-CPA	-	01	-	-	-	-	II(R)	MACLS	01
E	CAR-CPU	-	-	2	1	04	-	I(R)& II®	MACLS	07
E	SKB- FKD	-	01	2	-	02	-	I, II(R)& III(R)	MACLS	05
E	MNQ-ETW	-	01	-	-	-	-	II(R)	MACLS	01
E	ALJN-HGJ	-	02	-	-	-	-	III (R)	MACLS	02
E	ETH-BRN	-	-	-	-	-	02	Mod. N/I	Mod. N/I	02
E	HRS- HRF	-	-	-	-	-	01	One T/Only		01

(B) Telecommunication:

i) Control Communication

S.No.	Route	Control Section	Communication Media
1	A	DDU - PRYJ	On Railway Owned OFC
2	E	CAR-CPU	SBDR – CAR; On Railway Owned OFC SBDR – AGY; On Rly owned 6 Quad cable
3	A	KCN-MRE (Area CNL)	On Railway Owned OFC
4	A	PRYJ-CNB	On Railway Owned OFC
5	A	SSL – RRH (Area CNL)	On Railway Owned OFC
6	A	RRH-SKB (Incl. ETW Branch)	On Railway Owned OFC
7	A	SKB-SNS (Area CNL)	On Railway Owned OFC
8	E	SKB-FKD (Area CNL of SKB-SNS)	On Railway Owned OFC (SKB-MNQ) Other section on Railway owned U/G 6 Quad Cable
9	A	SNS – GZB	On Railway Owned OFC
10	B	PRYJ-NYN-MKP	On Railway Owned OFC
11	E	ALJN - HGJ	On Railway Owned OFC
12	E	ETH - BRN	Non-Controlled

ii) Telephone Exchange:

Station	Type of Exchange	Capacity	Installation Year
MZP	Electronic Exchange	128 ports	2003
CAR	Electronic Exchange	128 ports	2003
DDU (DRM/O)	ISDN Exchange	4000 ports	2003
PRYJ(NCR/HQ)	ISDN Exchange	2000 ports	2008
FTP	Electronic Exchange	128 ports	2006
GMC	RLU (CNB)	396 ports	2011
CNB	ISDN Exchange	3000 ports	2011
ETW	Electronic Exchange	128 ports	2009
TDL	Electronic Exchange	1500 ports	2012
ALJN	Electronic Exchange	520 ports	2019
ACOI	Electronic Exchange	300 ports	2019
NYN	Electronic Exchange	256 ports	2019
SFG	Electronic Exchange	300 ports	2019
PRYJ Station	Electronic Exchange	300 ports	2019

9.2 Performance – Signal

S.No.	I T E M	TARGET (2021-22)	Actuals (Upto Nov)		Variation
			2020-21	2021-22	
1	Signal Failures	4604	2489	3084	(-) 23.90%
2	Signal Failures attributed to S&T	2412	1320	1585	(-) 20.07%
3	Overhauling of signaling gears.				
	a) Lever frames	100% due(5)	3	0	
	b) Block Instt.	100% due (6)	14	6	
	c) Relays	100% due(1500)	1893	469	
4	Station Inspection	100% due	65.54%	52.45%	(-)20%
	F/P Inspection	100% due	3.06%	30.56%	(+)898.69%

9.3 PERFORMANCE – TELECOM

S.No.	I T E M	TARGET (2021-22)	Actuals (Upto Nov)		Variation
			2020-21	2021-22	
5.	Efficiency of Railway owned CNL circuits				
	a) RE/Q Cable	99%	99.90%	99.99%	(+) 0.09%
	b) OFC	100%	99.89%	99.99%	(+) 0.11 %
6.	Efficiency of DOT owned CNL circuits	--	--	--	
7.	Training - Refresher	Actual due (2021-22)	Done Up to Nov '2020	Done Up to Nov '2021	
	a) SSE/JE/Sig	32	33	19	
	b) SM	65	150	78	
	C) SSE/JE/Tel	19	15	13	
	d) TCM	32	31	29	