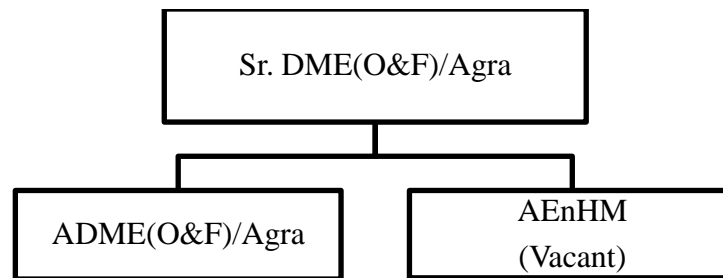


MECHANICAL DEPARTMENT (OPERATION & FUEL)

Organization Chart



Mechanical (O&F) wing of Agra Division

Sr. DME(O&F)	Raj Kumar Verma	9760536401
ADME(O&F)	Samarth Agrawal	9760536402
AEnHM, Agra	Vacant	-

Domain of Mechanical (O&F) Wing of Agra division:-

1. Diesel Operation

- Planning & Utilization of Diesel Locomotives over Agra Division in co-ordination with nearby Divisions and Loco Sheds for facilitating smooth Diesel operation.
- Reduction of detentions and ensuring reliability of Diesel operation through failure monitoring, failure analysis and implementation of remedial measures.
- Monitoring of various operational parameters to keep a tab on health and status of diesel Locomotive on real time basis through REMMLOT (Remote monitoring and management of locomotives & trains) system provided in power control cell to assist troubleshooting and root cause analysis of failures.
- Training/Counseling of running staff (CLI/LP/ALPs) for safe running of trains (SPAD, SR Violations & Troubleshooting etc.).
- Inspection of Running rooms and Crew Lobbies time to time.
- **Diesel Loco running staff position as per SLI (Elect)/HQ/AGC :-**
In Agra Division, Diesel crew administrative control, Lobby & Running Room management is with Electrical(OP) Department. Only, 10 CLI's have been nominated to work under the control of Mechanical (O&F) wing for counseling, preparation of joint note, failure investigation apart from counseling of diesel crew.

Details of diesel crew, as provided by Elect(OP) deptt. as on 01.02.2022, is as under:-

Category	Sanction strength	On Roll	Vacancy
Loco Pilot Mail	36	06	30
Loco Pilot Pass.	17	13	04
Loco Pilot Goods	204	106	98
Loco Pilot Shunting	35	04	31
Asstt. Loco Pilot	252	111	141
CLI/LI	27	10	17
PCOR/TLC/CC (Drafted LP)	09	07	02
TOTAL	580	257	323

2. Fuel Section

- Operation and maintenance of 03 nos. RDIs located at Mathura, Idgah and Dholpur of Agra division.
- Implementation of fuel saving techniques in Agra Division (Trip Rationing, Shutdown of idle locomotives etc.).
- Enhancement of infrastructural facilities at RDIs such as installation of CCTV & Provision of internet/dongle etc. with online logging of fuel issues to locomotive/Train on fuel management system (FMS).

3. Accident Relief and Disaster Management

ART	A' Class ART with 140 Ton Crane at Agra
SPARME	HS-SPARME at Agra

- Operation and maintenance of 'A' Class ART (Accident relief Train) equipped with 140 Ton BD (breakdown) Crane.
- Operation and maintenance of HS-SPARME (high speed self propelled accident relief medical equipment).
- Regular drills of ART and SPARME for round the clock readiness for restoration and rescue operation/activities.
- Ensuring availability of adequate tools and equipments prescribed for ART and HS-SPARME as per CAMTECH Manual.

4. RAILBUS MATHURA

- Rail Bus services were started on 02/10/1998 between Mathura-Vrindavan section, which is about 11.4 Kms (Meter gauge section).
- The depot was shifted to Mathura Junction (Agra end side) to NCR after closure of the erstwhile Railbus depot at Mathura Cantt of NER due to gauge conversion.
- Railbus no. 10009 YRB is available for operation in Mathura-Vrindavan (MG) Section.