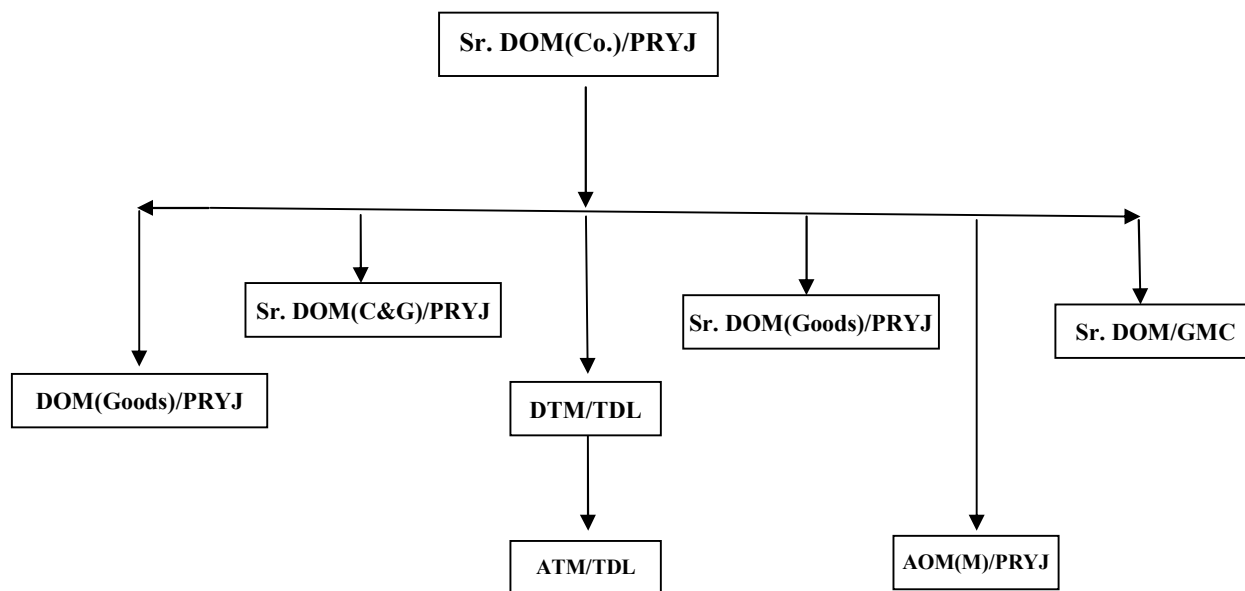


Organization Chart of Operating Department



3. OPERATING

3.1 Staff position (As on 01.04.2022)

Category	Sanctioned Strength	Men on Roll	Vacancy
Group 'C'	5413	3483	1930
* Group 'D'	483	532	+49
Total	5896	4015	1881

* **Note :** Pointsman "A" (GP-1900) included in Group "C", SS-1583, MOR-1246, VAC-337.

3.2 Coaching performance:-

Punctuality (%age)

Service	2019-20	2020-21 April-March	2021-22 April-March	%age
(DRNT, GBR, RAJ, SHT, SUF) M.R.Train	46.6	-	64.0	-
All Mail/Exp.	46.8	86.1	78.3	-9.1
Passenger	34.9	77.4	76.8	-0.8
All Services	42.4	84.8	77.8	-8.3

3.3 Freight loading:-

Revenue loading

Commodity	2019-20	2020-21 April-March	2021-22 April-March	Percentage
Container	244	264	326	+23.5
Food Grain	12	18	28	+55.6
Cement	40	33	50	+51.5
Fertilizer	31	30	30	-
Stone	03	18	16	-11.1
Ballast	19	16	20	+25.0
Other	04	08	18	+125.0
Total	353	387	488	+26.1

PERFORMANCE:-

Items (wgons/day)		Target (2019-20)	2019-20	April-March		%age
				2020-21	2021-21	
Throughput	In Wagons	-	12897	13584	17420	+28.2
	In Train	-	257.4	278.3	349.1	+25.4
Revenue loading	In Wagons	-	353	387	488	+26.1
	In Million Tone	5.94	4.405	5.002	6.318	+26.3
Wagon Holding		12000	11028	9697	10875	-12.6
Wagon Turn Round		2.45 days	1.70	1.11	1.19	-7.2
Electric Loco utilization		450Kms	432.9	432.1	420.9	-2.6
Diesel Loco utilization		320Kms	318.6	326.2	380.3	+16.6
Punctuality Mail/Exp.		60.0%	46.8	86.1	78.3	-9.1
Terminal detention (Same day PM to release % age)		-	77.2	82.7	75.4	-8.8
Engg. Blocks (Hrs./day)		-	154'-02"	176'-06"	193'-03"	+9.6
Rocket trains		-	9.2	4.9	3.3	-32.6

Main Line - Total Stations = 98, B/H = 06

Branch Line- Total Stations = 31, B/H = 01

Sections Wise Details:-

Main Line				Branch Line			
Section	Distance	Stations	Block huts	Section	Distance	No. of Stations	No. of Block huts
DDU-PRYJ	152.89	20	1	HRS-HRF	9.02	01	-
PRYJ-CNB	193.0	31	1	CAR-CPU	102.77	06	01
CNB-TDL	228.76	25	-	ALJN-HGJ	13.32	02	-
TDL-GZB	183.84	22	-	SKB-FKD	106.29	05	-
				BRN-ETAH	58.77	02	-
				NYN-MKP	92.74	13	-
				ETW-MNQ	55.52	01	-
				CNB-CPA	2.42	01	-
Total		98	02		440.85	31	01

Flow of Traffic:-

UP direction -- Iron and Coal Rakes for Power House of Northern Region

DN direction -- Food Grain and Empties for Collieries.

Inward rakes of Clinker, Iron, Coal, Food grain and POL are received at CAR, NYN, SFG, FTP, CNBI, CPC, JUHI, PNK, ETW, HGJ, ALJN and DER.

Outward traffic of Food Grain is from CPC, MNQ, ETAH, Containers at DER, GMC, PNK, KRJ, Stone from SKGH, LUSA, CAR, NYN, and Cement from J. P. Associates CAR.

Interchange Points (Avg. / day March-2022)

There are 18 interchange points:-

I/C Point	Rly	T/O	M/O	I/C Point	Rly	T/O	M/O
CAR-CPU	EC	9.9	10.0	GZB-TDL	NR	20.5	19.8
DDU-PRYJ	EC	34.3	38.3	LK O-ALD	NR	7.3	2.9
AGRA-TDL	NC	17.0	15.3	LKO-GMC	NR	14.4	20.3
JBP-MKP	NC	15.6	16.9	VYN-JEP	NR	1.9	2.0
JHS-GMC	NC	15.9	12.7	MB-HGJ	NR	1.8	1.9
PRRB-PRYJ	NE	1.0	3.3	MB-KRJ	NR	6.7	2.9
CPA-GMC	NE	4.3	5.9	ETW-BHIND	NC	3.8	2.6
MKP-BANDA	NC	0.5	0.7	EDFC-BDN	NC	14.8	11.3
IZN-FBD	NE	0.2	0.7	EDFC-KRJ	NC	8.0	9.8

Performance April-March (2021-22):-

S.N.	Items (Avg. per day)	Target	Achievement		% var.
			2020-21	2021-22	
1	Throughput of Wagons	-	13584	17420	+28.2
2	Throughput of Trains	-	278.3	349.1	+25.4
3	Revenue loading (Wgn/Day)	-	387	488	+26.1
4	Wagon holding	12000	9657	10875	-12.6
5	Wagon Turn Round	2.45 days	1.11	1.19	-7.2
5	Electric loco utilization	450 Kms	432.1	420.9	-2.6
6	Diesel loco utilization	320 Kms	326.2	380.8	+16.6
7	Punctuality Mail/Exp.(%age)	60.0%	86.1	78.3	-9.1
8	Mail Exp ran per day	-	93.1	188.6	+102.6
9	Terminal detention (Same day P/M to Rele %)	-	82.7	75.4	-8.8
10	Speed-MGS-GZB (Up)	30 Km	43.5	38.8	-10.8
	GZB-MGS (Dn)	35 Km	44.2	44.0	-0.5
11	Engg Block Granted (Hrs per Day)	-	176'-06"	193'-03"	+9.6