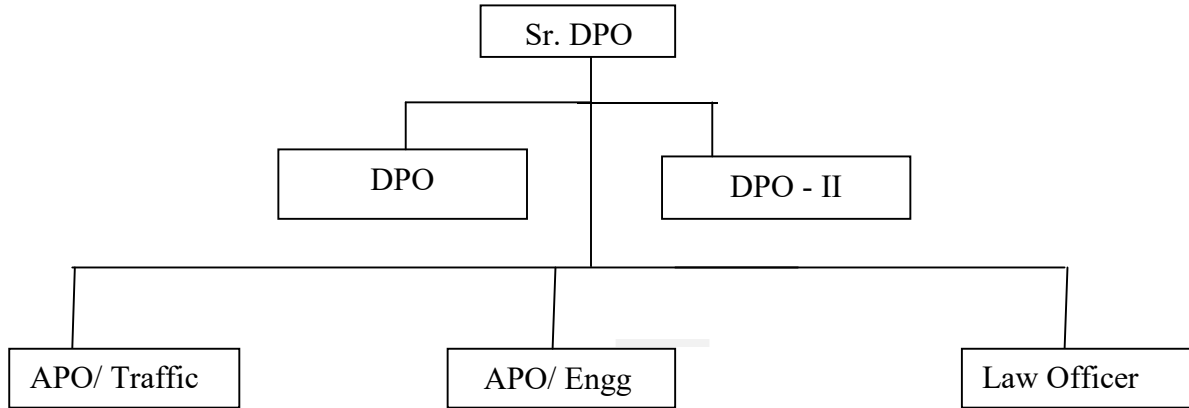


## PERSONNEL DEPARTMENT

8.1 Personnel Department is headed by Sr. D.P.O assisted by two DPO, two APO and one Law officer



The Personnel Department is doing establishment work of 150 Officers and 28396 staff.

The details are as under –

### (i) On roll position of Officers

Deptt.	HAG (NF)	SAG (NF/DACP)	SG/JAG	Sr. Scale	Jr. Scale / Gr. 'B'	Total
Gen Admn	1	3	0	0	3	7
Stores	0	0	1	1	0	2
Personnel	0	0	1	2	3	6
NCRI College	0	0	0	0	1	1
Commercial	0	0	3	0	4	7
Operating	0	0	3	3	3	09
Safety	0	0	1	0	1	2
S&T	0	0	5	5	8	18
Mechanical	0	0	3	3	4	10
Civil Engg	0	0	6	2	15	23
Elect.	0	0	8	5	10	23
Medical	0	15	8	6	13	42
<b>Total</b>	<b>1</b>	<b>18</b>	<b>39</b>	<b>27</b>	<b>65</b>	<b>150</b>

### (ii) Ministerial & Gr. 'D' Staff position with vacancy of Personnel Department

Category	Sanctioned Strength	Men on Roll	Vacancy
Ch.O.S.	34	26	08
O.S.	93	49	44
Sr. Clerk	26	46	-20
Jr. Clerk	30	20	10
Group - D	06	06	00
<b>Total</b>	<b>189</b>	<b>153</b>	<b>42</b>

(iii) Department wise staff position

	ADMN	CIVIL ENGG	MECH	OPTG.	COML.	S&T	ELECT.	MEDICAL	PERS.	STORE	TOTAL
	C	C	C	C	C	C	C	C	C	C	C
S/S	172	10055	4107	5860	3230	2649	9163	785	235	1	36257
O/R	157	7077	3747	3904	2183	2167	8240	741	180	0	28396

The highlights and achievements of Personnel Department during July - 2022 are given below-

1. Position of MORLY/PG/DPG Cases

Opening Balance	New Cases	Final	Closing Balance
21	45	41	25

2. Position of MP/MLA & VIP references

Opening Balance	New Cases	Final	Closing Balance
02	04	03	03

3. CA-iii Reference

Opening Balance	New Cases	Final	Closing Balance
01	07	05	03

4. Ex-Gratia lump-sum compensation

Opening Balance as on 01.07.2022	No. of cases Accrued during the month	Sanctioned by DRM in the month of July - 2022	Balance as on 31.07.2022 at divisional level	Remarks
02	00	00	02	02 case under process

5. Selection & Suitability :

Finalized during July – 2022

02 - Selection

07 - Suitability

6. Settlement Payments:

Settlement payments made as under:-

Superannuation	78
Death	10
Voluntary Retirement	-
Total	88

7. Compassionate Ground Appointment cases

10 CG cases have been finalized while 03 CG cases are under process.

**8. Redressal of grievances of Running Staff of Prayagraj Division:-**

Month	Opening Bal. of Grievance	Received in the month	Redressed in the month	Closing balance	Remarks if any
July - 2022	10	50	42	18	-

**9. Position of pension revision cases of pre – 2016**

Total No. of Cases	Total Nos. finalized up to July - 2022	Closing balance at end of July - 2022
23904	23070	834

**Special Achievements**

- 10.1** 394 Promotions done during this month.
- 10.2** 244 RTI cases were replied during this month.
- 10.3** In UMID portal 95% employees have been registered against which 86.4% cards have been generated.
- 10.4** No. of staff newly recruited and posted after training (a) RRB- 15, (b) CG – 02
- 10.5** 88 Settlement Payment was done during this month.

**10.6 HRMS modules Implementation upto July - 2022**

HRMS data	-	97.53%
E – SRs	-	98.44%
Office Order	-	630
E Pass	-	130921 issued. P.A.S. not available
PF withdrawal	-	3342 sanctioned

**11. Assistance Required**

**11.1.** Filling up of 02 vacant post of APO at the earliest.

**11.2.** The Railway Board's benchmark for Personnel Department is 9.49 whereas the benchmark for Prayagraj division is 6.77. As such there is acute shortage of staff in Personnel Department of Prayagraj Division. In Agra and Jhansi division 17 and 49 posts respectively are lying vacant for the last five years which may kindly be transferred to Prayagraj division which has sanctioned strength of 36257.

**POSITION OF COURT CASES as on July - 2022**

S N	NAME OF COURT	PENDING CASES INCL. CONTEMPT	CONTEMP T CASES	CASES ADDED	CASES DECIDED DURING MONTH			WINNING PERCENTA GE (%)	BALANCE AT END OF THE MONTH
					FOR RAILWAY	AGAINST RAILWAY	TOTAL		
1	SUPREME COURT	05	01	0	0	0	0	0.00	06
2	HIGH COURT	225	04	01	03	0	03	100.00	225
3	C A T	731	46	03	04	01	05	80.00	733
4	DISTRICT COURT	61	0	07	0	0	0	0.00	61
5	C D R F	0	0	0	0	0	0	0.00	0
6	ARBITRAT ION	0	0	0	0	0	0	0.00	0
7	ESTATE OFFICER	0	0	0	0	0	0	0.00	0
Excluding CDRF ABITRATION ESTATE		1022	51	11	07	01	08	87.5	1025