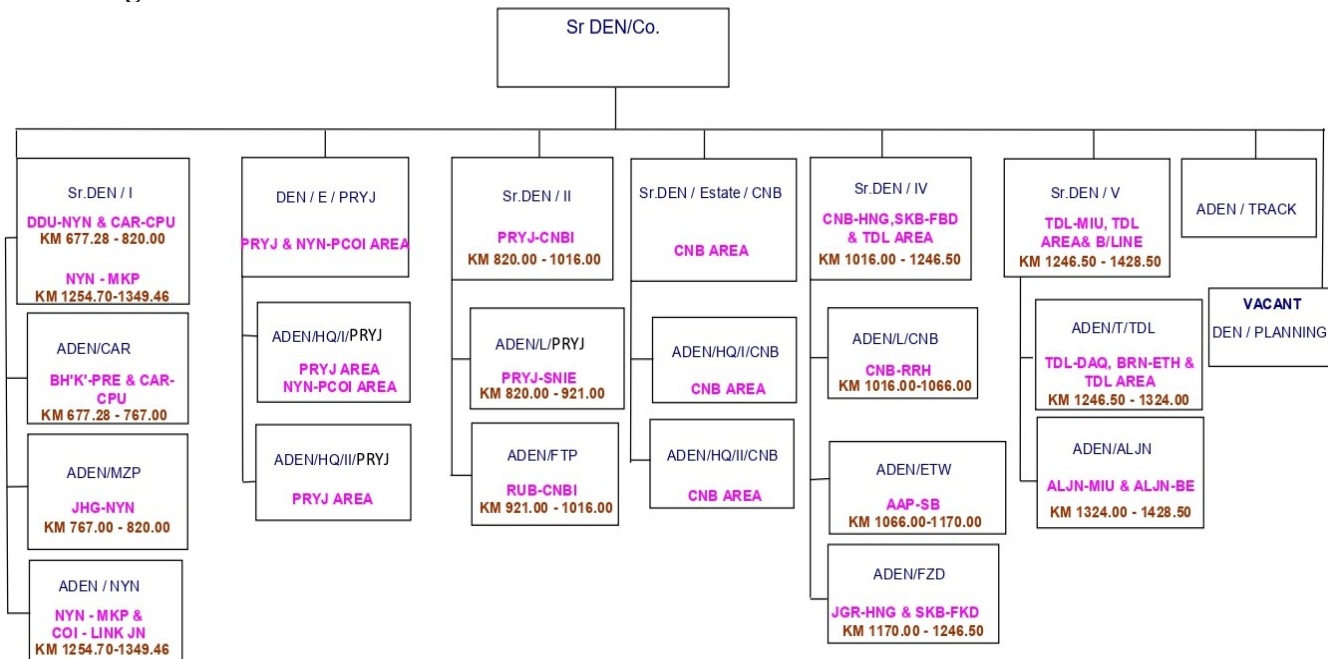


ENGINEERING

1.1 Organization



1.2 STAFF STRENGTH AND VACANCY POSITION:

Branch	Category	Sanctioned strength	Men on roll	Vacancies	% of Vacancies against Sanctioned Strength	% of Staff against Sanctioned Strength
P. Way	SSE/P-Way	265	209	56	21.1	78.9
	JE/P-Way	141	123	18	12.8	87.2
	Track Maintainer-I	715	550	165	23.1	76.9
	Track Maintainer-II	1430	1340	90	6.3	93.7
	Track Maintainer-III	1430	1331	99	6.9	93.1
	Track Maintainer-IV	3573	2194	1379	38.6	61.4
Works	SSE/Works	68	54	14	20.6	79.4
	JE/ Works	33	20	13	39.4	60.6
Total		7655	5821	1834	24.0	76.0

1.3 BRIDGES:

Section	Important	Major	Minor	ROB
DDU-GZB (M/L)	4	84	1592	76
Branch Line	1	71	918	17

LEVEL CROSSING GATE

1.1 Summary of level crossing

Section	Spl	A	B	C	Total
DDU-GZB M/L	34	19	16	36	105
NYN-MKP	1	0	9	14	24
Branch lines	3	2	8	47	60

1.2 ANALYSIS OF MANNED LEVEL CROSSING

Engineering							Traffic					
Section	Spl	A	B	C	D	Total	Spl	A	B	C	D	Total
DDU-GZB M/L	15	12	3	28	0	58	19	7	13	8	0	47
NYN-MKP	1	0	3	8	0	12	0	0	6	6	0	12
Branch lines	0	0	4	42	0	46	3	2	4	5	0	14
Total	16	12	10	78	0	116	22	9	23	19	0	73
Interlocked							Non-Interlocked					
Section	Spl	A	B	C	D	Total	Spl	A	B	C	Total	TVU Nil
DDU-GZB M/L	35	19	16	35	0	105	0	0	0	0	0	0
NYN-MKP	1	0	9	6	0	16	0	0	0	8	8	0
Branch lines	3	2	7	8	0	20	0	0	0	39	39	1
Total	39	21	32	49	0	141	0	0	0	47	47	1

Details of LC having TVU>20000

Section	Spl	A	B	C	D	Total
DDU-GZB M/L	28	17	15	37	0	97
NYN-MKP	1	0	9	4	0	14
Branch lines	3	2	6	12	0	23
Total	32	19	30	53	0	134

PROGRESS OF IMPORTANT WORKS:

S. No.	Items	Target for 2022-23	Cumulative Progress upto Aug-22	Cumulative Progress upto Aug-21	Comparative performance w.r.t last year Prog. in %
1	Track Renewal (CTR Unit)	228	69.23	46.12	150
2	Ballasting (Thou.Cum.)	210	111.80	70.42	159
3	Deep Screening (Km)	278	123.61	47.01	263
4	Scrap Disposal (MT)	12000	4948	4161	119
	Rail	11000	4336	3046	-
	C.I	400	0	0	-
	Other	600	612	1115	-
	Works	-	-	-	-
5	Improved SEJ(Nos)	77	101	85	119
6	Laying of Glued Joints (Nos)	0	695	844	82
7	Laying of Fan Shaped Turnouts (Sets) Eff.	365.25	103.50	100.38	103
8	Accident on Engineering Account	-	0	0	-
9	Rail/Weld Fracture (Nos)	-	6	8	-
10	Tamping (Km.) HOT	4225	725.89	821.04	88
11	USFD(Km.)	18781	7705	7865	98
12	Channel Sleeper(Nos.)	4400	161	0	100