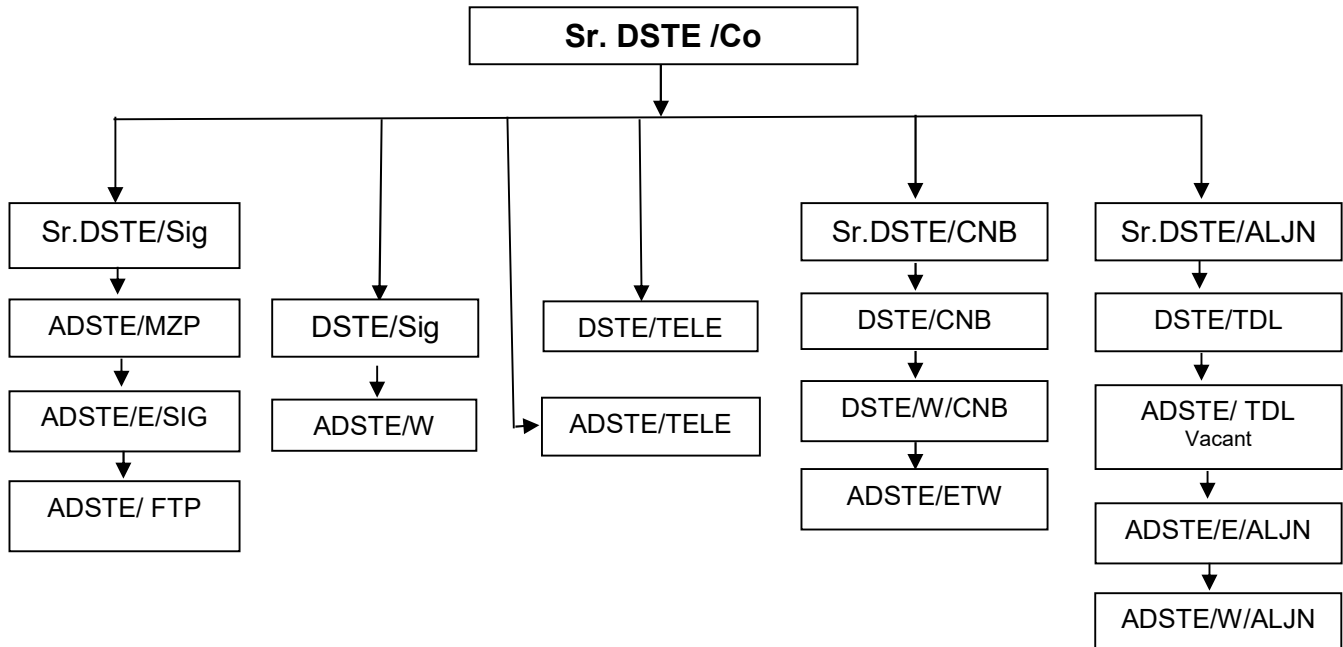


9.0 Signal & Telecommunication

ORGANISATION CHART



Note - The S&T Branch is headed by Sr.DSTE/Co, headquartered at Prayagraj who is assisted by three Sr.DSTEs (01 each at Prayagraj, Kanpur & Aligarh), 05 DSTEs (02 at Prayagraj, 02 at Kanpur & 01 Tundla) and 07 ADSTEs, (02 at Prayagraj, 01 each at Mirzapur, Fatehpur, Etawah & 02 at Aligarh).

9.1 S&T Installations:

(A) Signaling system:

(i) Type of Interlocking:

Route	Section	RRI	Panel	EI	Block Hut	Electro-mech.	Mechanical	Interlocking	Signaling	No. of Stations
A	GZB- DDU	02	00	98	01 (BH-TT)	-	-	IIIR	MACLS	101
B	MKP-LKJN	-	03	10	-	-	-	IIR	MACLS	13
B	CNB-CPA	-	01	-	-	-	-	II(R)	MACLS	01
E	CAR-CPU	-	-	06	-	-	-	III(R)	MACLS	06
E	SKB- FKD	-	01	04	-	-	-	III(R)	MACLS	05
E	MNQ-ETW	-	01	-	-	-	-	II(R)	MACLS	01
E	ALJN-HGJ	-	02	-	-	-	-	III (R)	MACLS	02
E	ETH-BRN	-	-	2	-	-	-	III(R)	MACLS	02
E	HRS- HRF	-	-	-	-	-	01 (HRF)	One T/Only		01
Total		02	08	120	01	0	01			132

(B) Telecommunication:

i) Control Communication

S.No.	Route	Control Section	Communication Media
1	A	DDU - PRYJ	On OFC
2	E	CAR-CPU	SBDR - CAR; On OFC SBDR - AGY; On 6 Quad cable
3	A	KCN-MRE (Area CNL)	On OFC
4	A	PRYJ-CNB	On OFC
5	A	SSL - RRH (Area CNL)	On OFC
6	A	RRH-SKB (Incl. ETW Branch)	On OFC
7	A	SKB-SNS (Area CNL)	On OFC
8	E	SKB-FKD (Area CNL of SKB-SNS)	On OFC (SKB-MNQ) Other section on U/G 6 Quad Cable
9	A	SNS - GZB	On OFC
10	B	PRYJ-NYN-MKP	On OFC
11	E	ALJN - HGJ	On OFC

12	E	ETH - BRN	On OFC
----	---	-----------	--------

ii) Telephone Exchange:

Station	Type of Exchange	Capacity	Installation Year
MZP	Electronic Exchange	128 ports	2003
CAR	Electronic Exchange	128 ports	2003
DDU (DRM/O)	ISDN Exchange	4000 ports	2003
PRYJ(NCR/HQ)	ISDN Exchange	2000 ports	2008
FTP	Electronic Exchange	128 ports	2006
GMC	RLU (CNB)	396 ports	2011
CNB	ISDN Exchange	3000 ports	2011
ETW	Electronic Exchange	128 ports	2009
TDL	Electronic Exchange	1500 ports	2012
ALJN	Electronic Exchange	520 ports	2019
ACOI	Electronic Exchange	300 ports	2019
NYN	Electronic Exchange	256 ports	2019
SFG	Electronic Exchange	300 ports	2019
PRYJ Station	Electronic Exchange	300 ports	2019

9.2 Performance - Signal

S.No.	I T E M	TARGET (2022-23)	Actuals (Upto Sep)			Variation of 2022-23 wrt	
			2020-21	2021-22	2022-23	2020-21	2021-22
1	Signal Failures	4604	1750	2378	2376	(+)35.77%	(-)0.08%
2	Signal Failures attributed to S&T	2412	944	1238	1216	(+)28.81%	(-)1.78%
3	Overhauling of signaling gears.						
	a)Lever frames	100% due (1)	3	0	1		
	b)Block Instt.	100% due (14)	14	5	10		
	c) Relays	100% due (1500)	1208	175	847		

4	Station Inspection F/P Inspection	100% due 100% due	46.03% 3.06%	37.24% 21.94%	34.36% 39.58%		
---	--------------------------------------	----------------------	-----------------	------------------	------------------	--	--

9.3 PERFORMANCE - TELECOM

S.No.	I T E M	TARGET (2022-23)	Actuals (Upto Sep)			Variation wrt 2020-21	Variation wrt 2021-22
			2020-21	2021-22	2022-23		
5	Efficiency of Railway owned CNL circuits						
	a) RE/Q Cable	99%	99.95%	99.97%	99.99%	(+) 0.04%	(+) 0.02%
	b) OFC	100%	99.93%	99.95%	99.98%	(+) 0.05%	(+) 0.03%
6	Efficiency of DOT owned CNL circuits	--					
7	Training - Refresher						
	a) SSE/JE/Sig	30	31	14	10		
	b) SM	98	76	40	32		
	c) SSE/JE/Te1	30	13	13	18		
	d) TCM	25	24	21	22		