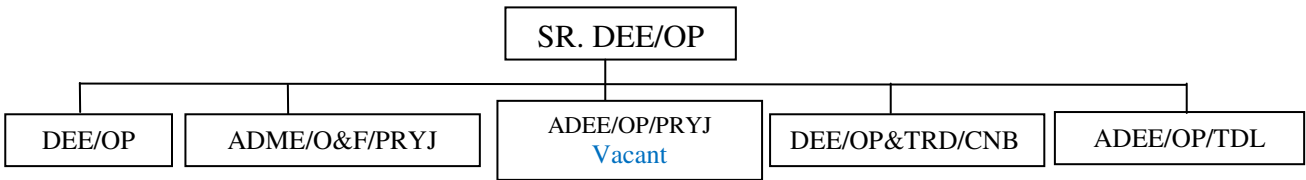


## Organization Chart



### 1.1 Important Performance Data Elect/OP (Yearly average up to Sep) is given below

SL	Items	Annual Figures		Up To September			% Var With 20-21	% Var With 21-22
		2020-21	2021-22	2020-21	2021-22	2022-23		
<b>Locomotive Failures</b>								
1.	EP Failure	295	267	126	121	177	<b>+40.5</b>	<b>+46.3</b>
2.	DP Failure	18	24	4	7	16	<b>+300.0</b>	<b>+128.6</b>
<b>Total</b>		<b>313</b>	<b>291</b>	130	128	193	<b>+48.5</b>	<b>+50.8</b>
3.	No. Of Trains Lost <b>Elect</b>	194	588	50	277	436	<b>+772.0</b>	<b>+57.4</b>
4.	Trains Lost <b>DSL</b>	13	100	3	34	37	<b>+1133.3</b>	<b>+8.8</b>
5.	Freight Utilization <b>Elect</b>	425.6	420.2	454.3	416.1	384.8	<b>-15.3</b>	<b>-7.5</b>
6.	Freight Utilization <b>DSL</b>	326	367.3	335.7	366.8	333.8	<b>-0.6</b>	<b>-9.0</b>
7.	POL (Goods) <b>Elect</b>	158.2	199.1	141.1	183.2	221.5	<b>+57.0</b>	<b>+20.9</b>
8.	POL Goods <b>DSL</b>	32.1	30.4	28.0	32.3	27.4	<b>-2.1</b>	<b>-15.4</b>
9.	Gross Kms Per Day (Goods) <b>Elect</b>	67334	83663	64106	76242	85229	<b>+32.9</b>	<b>+11.8</b>
10.	Gross Kms Per Day (Goods) <b>DSL</b>	9523	11164	9389	11861	9135	<b>-2.7</b>	<b>-23.0</b>
11.	% Trips Within 10 Hrs From Sign-On <b>Elect</b>	78.7	59.0	85.1	50.3	52.3	<b>-38.6</b>	<b>+3.9</b>
12.	Extended Crew Run (Rocket)	1467	1588	579	821	875	<b>+51.1</b>	<b>+6.6</b>
13.	Energy regenerated by 3-phase locos (In Kwh)	53449912	108697455	15956648	41795398	46902712	<b>+193.9</b>	<b>+12.2</b>

## 1.2 Section Wise Details of 10 Hrs/9Hrs Implementation

10 Hrs Implementation 2022-23 (DDU-PRYJ)																	
Section	TRIPS PERFORME	Within 09 Hrs From Sign-On		Within 10 Hrs From Sign-On		9-11 Hrs		10-11 Hrs		11-12 Hrs		12-13 Hrs		Beyond 13 Hrs		Beyond 12 Hrs	
		No. of Trips	% Trips	No. of Trips	% Trips	No. of Trips	% Trips	No. of Trips	% Trips	No. of Trips	% Trips	No. of Trips	% Trips	No. of Trips	% Trips	No. of Trips	% Trips
		1	6	7	8	9	10	11	12	13	14	15	16	17	18	19	20
DDU - PRYJ	1202	557	46.4	715	59.4	339	28	181	15	154	13	100	8	52	4	153	1.3
GMC- DDU	105	19	17.6	31	29.5	38	36	26	24	23	21	20	19	6	6	26	2.5
DDU- COI- MKP	816	707	86.6	751	92.0	75	9	31	4	19	2	11	1	5	1	16	0.2
MKP- COI- DDU	715	333	46.5	440	61.5	217	30	110	15	99	14	46	6	20	3	67	0.9
PRYJ- GMC	1235	518	41.9	719	58.2	395	32	194	16	167	14	100	8	55	4	155	1.3
GMC- TDL	933	405	43.4	524	56.1	306	33	171	18	126	13	71	8	42	4	113	1.2
GMC- GZB	2	0	14.3	1	21.4	1	21	1	21	1	36	0	14	0	7	1	5.0
TDL- GZB	109	84	77.0	93	85.1	14	13	5	5	6	6	3	3	2	2	5	0.5
GZB- TDL	219	106	48.3	135	61.5	57	26	27	12	25	11	17	8	15	7	33	1.5
GZB- GMC	22	8	33.8	10	42.9	6	26	5	21	4	17	2	10	2	9	4	1.8
TDL- GMC	516	190	36.7	242	46.8	126	24	72	14	68	13	63	12	71	14	133	2.6
GMC- PRYJ	1170	384	32.8	535	45.7	336	29	185	16	188	16	156	13	107	9	263	2.2
DDU- GMC	1	0	25.0	0	25.0	0	0	0	0	1	38	0	13	0	25	0	0.0
PRYJ - DDU	1052	850	80.8	918	87.2	132	13	64	6	42	4	20	2	9	1	29	0.3

## Pre-Departure Detention Electric Hauled Trains (In Minutes)

Pre-Departure Detention Over Prayagraj Division (Comparative)						
Period	Sep-21	Sep-22	% Var	Up To Sep		% Var
				2021-22	2022-23	
<b>PDD (In Minutes)</b>	89	75	-15.5	84	77	-9.3

### 1.3 Running Rooms

Sl	Running Room	No. Of Rooms	No. Of Beds	Occupancy		Maintained By	Availability of Ladies Room with Attached washroom
				Avg Per day	Hourly Peak		
1	DDU (Combined)	53	153	209	148	Outsourced	Available
2	PRYJ (Combined G+5)	80	160	198	144	Outsourced	Available
3	PRYJ (Civil Lines Side)	15	60	19	12	Outsourced	Available
4	PCOI	11	44	42	45	Outsourced	Available
5	MKP	8	24	16	27	Outsourced	Available
6	CNB Old (LP)	19	79	81	78	Outsourced	Available
7	CNB New (LP)	39	78	121	78	Outsourced	Available
8	GMC (LP)	28	92	153	88	Outsourced	Available
9	GMC (GD)	07	50	84	53	Outsourced	#
10	CPA	12	60	50	43	Outsourced	Available
11	FBD	5	20	30	30	Outsourced	Not Available
12	TDL (Combined)	64	144	122	107	Outsourced	Available
13	DER (Combined)	16	32	45	32	Outsourced	Available
<b>Total</b>		<b>357</b>	<b>996</b>				

### 1.4 Crew Booking Lobbies

Average Sign-On/Off Position													
Lobby	Sign-On			Sign-Off			Sign-On			Sign-Off			Total
	Running Staff						Guard						
	HQ Crew	OS Crew	Total	HQ Crew	OS Crew	Total	HQ Crew	OS Crew	Total	HQ Crew	OS Crew	Total	
DDU	0	239	239	0	240	240	0	100	100	0	100	100	<b>679</b>
PCOI	123	35	158	123	35	158	21	20	41	21	20	41	<b>398</b>
PRYJ	339	172	511	339	172	511	148	58	206	149	58	207	<b>1435</b>
CNB	124	206	330	124	201	325	22	79	100	21	79	100	<b>855</b>
GMC	290	192	482	296	192	488	47	87	135	47	88	135	<b>1240</b>
CPA	15	48	63	15	47	62	7	12	19	7	12	19	<b>163</b>
TDL	371	94	464	371	94	465	121	34	156	121	34	156	<b>1241</b>

## 1.5 Running Staff & Supervisor Position as on 01.10.2022

### 1.5.1 Running staff

Category	Sanctioned Strength	On Roll	Vacancy
<i>LP Mail</i>	498	438	-60
<i>LP Passenger</i>	194	202	+8
<i>LP Goods</i>	2069	1277	-792
<i>LP Shunting</i>	268	168	-100
<i>ALPs</i>	2502	3451	+949
<b>Grand Total</b>	<b>5531</b>	<b>5536</b>	<b>+5</b>

### 1.5.2 Running supervisor

Category	Sanctioned Strength	On Roll	Vacancy
<b>Loco Inspectors (Elect)</b>	238	146	-92
<b>CC/TLC</b>	241	51	-190
<b>Total</b>	<b>479</b>	<b>197</b>	<b>-277</b>