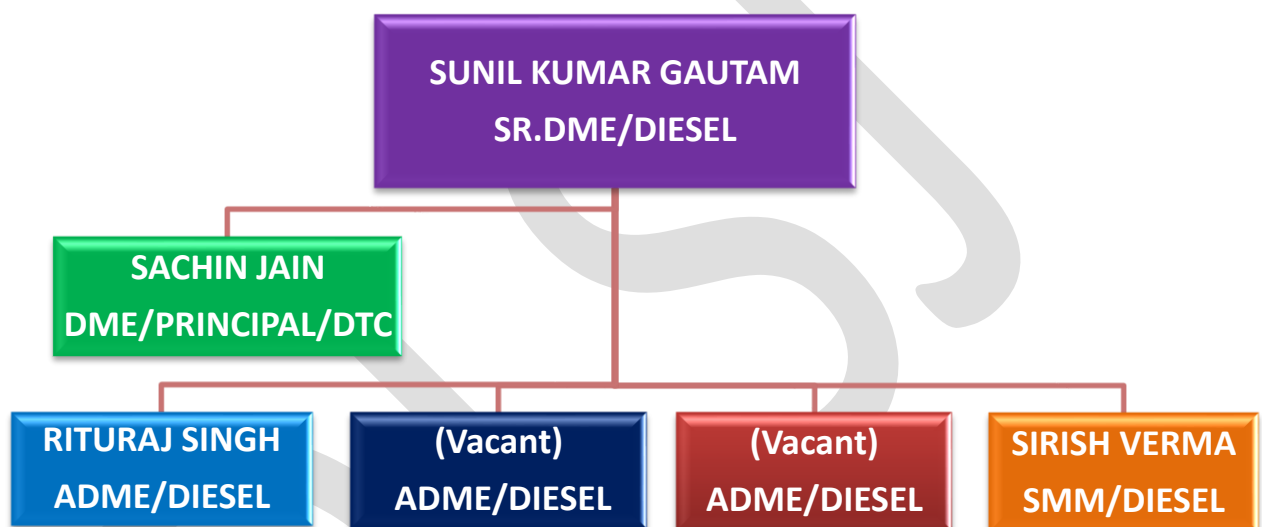


# MECHANICAL - DIESEL LOCO SHED JHANSI

Diesel Loco Shed Jhansi is the only Diesel Loco Shed in North Central Railway catering to traffic needs of Mail/Express, Passenger, Goods and Shunting services of diesel locomotives as well as Electric locomotives. The shed has completed 48 glorious years in the service of the nation in April'2023.

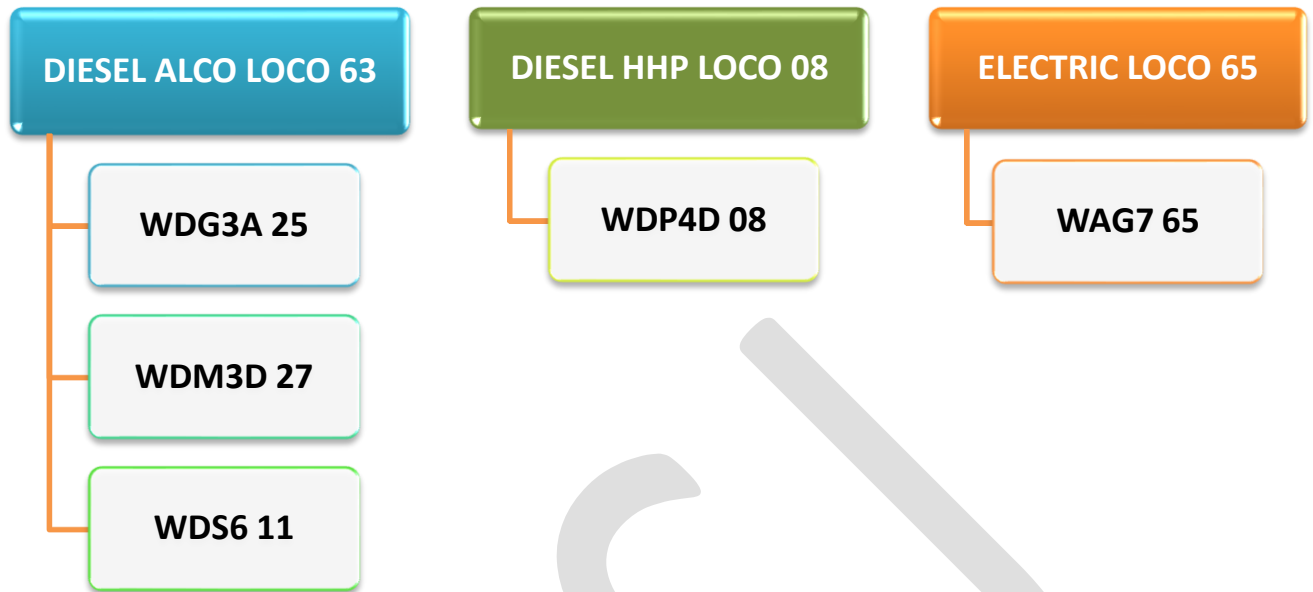
## ORGANIZATION CHART (GAZETTED)



## CONTACT DETAILS OF OFFICERS

Name	Designation	Rly Phones		BSNL Phones	
		Office	Residence	Office	Residence
Sunil Kumar Gautam	Sr.DME/Diesel	6300	-	2311452	-
Sachin Jain	DME/Diesel	6301	55446	-	-
Rituraj Singh	ADME/Diesel	6303	55413	-	-

## ASSETS MAINTAINED BY DIESEL LOCO SHED, JHANSI



## MAN POWER STATUS

726	• Sanctioned Staff
704	• Staff on Roll
-22	• Short Fall

## **DUTY LIST OF OFFICERS OF DIESEL LOCO SHED, JHANSI**

### **Shri Sachin Jain, DME/ Diesel**

- ❖ To monitor the working of all the Heavy Repair Sections of Diesel Shed including for Electric Locos.
- ❖ Correspondence related to RSP, M&P, Works Program, Warranty and Performance Feedback of Loco Spares to RDSO / DLW.
- ❖ Initiation of Tenders of works contracts and AMCs of JHS Diesel Shed.
- ❖ Monitoring of activities DTC, DTH and Loco Simulator.
- ❖ Monitoring of ISO Cell.
- ❖ Monitoring of Staff Canteen of Diesel Shed.
- ❖ Monitoring of DMIC (Record Office) and failure analysis & completion of failure report.
- ❖ Material requirement planning and follow up with Head Quarter Stores, DLW, DMW and other sheds, workshops and Firms.
- ❖ Scrap disposal
- ❖ Monitoring of maintenance of M&P of Diesel Shed.
- ❖ To monitor following areas of working of Diesel Shed.
  - I. Shed Laboratory.
  - II. Machine shop including pit wheel lathe.
  - III. Electrical and mechanical millwright sections.
  - IV. Fabrication.
- ❖ Any other work allotted by the Sr. DME/Diesel/JHS as per requirement.

### **Shri Rituraj Singh, ADME/Diesel**

- ❖ To monitor the following areas of working of Diesel Shed.
  - I. Electrical HSR Section.
  - II. Mechanical HSR.
  - III. Main and shift tool rooms of mech. and electrical wings including gasket room.
- ❖ To plan and monitor Heavy Schedules (M18 / Y1 / TOH and above)
- ❖ To plan and monitor the Running Schedules (M6 /180 Days / IC and below) of all Locos.
- ❖ Failure Investigation.
- ❖ Monitoring of all works pertaining to establishment section of this office.
- ❖ Monitoring of office administration.
- ❖ To monitor the following areas of working of Diesel Shed.
  - I. Electrical LSR section
  - II. Mechanical LSR Section
  - III. Shed Control Room,
  - IV. REMMLOT
  - V. Loco Washing Pit, Sand shed and sand treatment plant.
  - VI. Load Box.
- ❖ To plan & Monitor the Passenger Links of JHS Shed.
- ❖ To plan & monitor the movement of outstation Dead / Failed / Overdue locos.
- ❖ To co - ordinate with the Diesel Trouble Shooting Points / Trip Sheds at JHS, GWL, CNB and PRYJ.
- ❖ To liaison with other Diesel Sheds, PRC/JHS, PRC/PRYJ and other Divisional and Zonal Power Controls wherever JHS Locos are running.
- ❖ Monitoring of Incinerator and ETP.
- ❖ Monitoring of RCD and liaison with M/s IOC.
- ❖ Any other work allotted by the Sr. DME/Diesel/JHS as per requirement.

## ACHIEVEMENTS

**Good Work Done: Self-made test benches for electric loco** - For testing during maintenance work of electric locomotives, following test benches/ fixture/ gadgets have been prepared by the shed in house: -

**EMC Test Bench for Electric locos** - For testing of AC Locomotive Equipment i.e., EM Contactor coil resistance, EM Contactor coil pickup & drop voltage.



**EPC/EP Valve Test Bench for Electric locos** - For testing of AC Locomotive equipment i.e., Electro pneumatic valve coil resistance, coil pickup & drop voltage.



**CTF/ Reverser Test Bench for Electric locos** - For testing of AC Locomotive equipment i.e., Electro Pneumatic contactor, CTF Servo Motor, Reverser etc.



**MP Test Bench for Electric locos** - For testing of AC Locomotive equipment i.e., Testing of Conventional type MP.



**VCD Test Bench for Electric locos -**  
 For testing of AC Locomotive equipment i.e., Testing of performance of Vigilance Control Device unit.



**VCB Test Bench for Electric locos -**  
 For testing of AC Locomotive equipment i.e., Testing of Vacuum Circuit Breaker - various parameters.



**CHBA Test Bench for Electric locos -**  
 For testing of AC locomotives equipment (simplified battery charger)



**Other Good work done in DLSJ**

Loco 40408/WDP4D was stabled in shed from 25 sep'2021 due to SCR assembly failure. This SCR assembly would cost about ₹26.5 Lakh, but with the efforts of shed this problem of SCR assembly is resolved with only ₹12500, now loco is working properly. Net saving ₹ 26 Lakh approx.



## SAVING OF EXPENDITURE

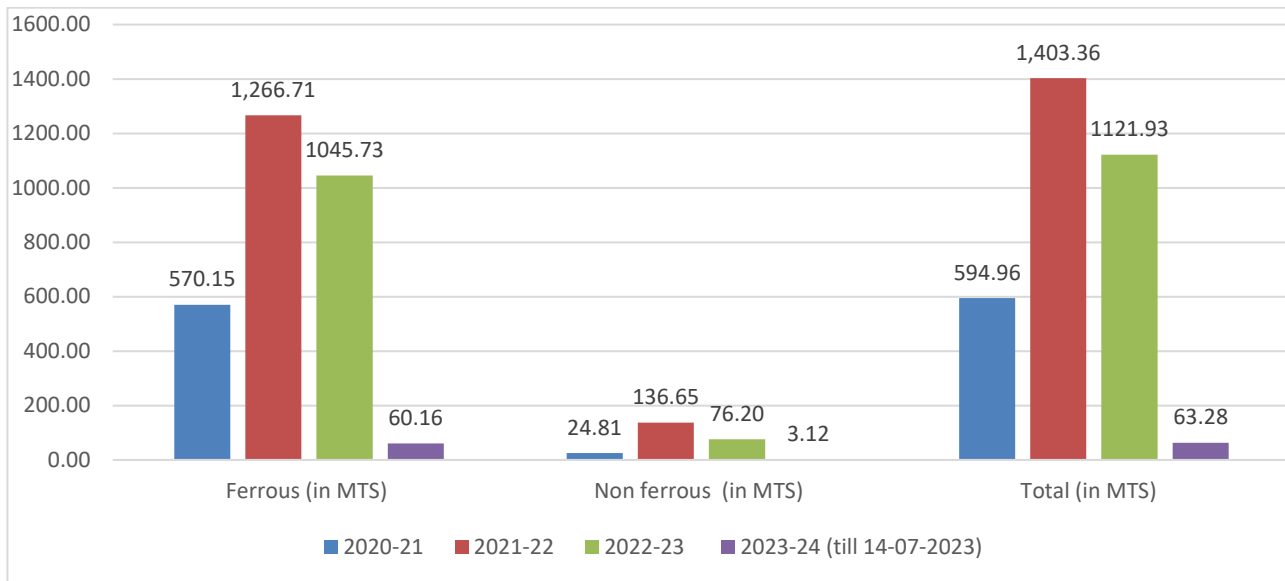
SL	Nature of Contract*	Present Contract					Action Taken**	Revised Contract		
		Brief Particulars of Contract	Unit	Awarded Quantity	Validity of Contract	Total Value		Resultant Value of Contract		Savings Done
								Value	W.E.F.	
1	AMC	AMC of TCC & LCC (14 Locos)	Loco Days	15344	15.06.2019 - 14.06.2022	28811	Short Closed) (3887 Loco Days Saved)	21701	31.05.2022	7110
2	AMC	AMC of TCC & LCC (08 Locos)	Loco Days	8768	15.03.2019 - 16.07.2022	15187	Short closed (615 Loco Days Saved)	14123	31.05.2022	1064
3	Other	Bogie frame uncoupling work	No's	150	02.11.2019 - 01.11.2022	942	Short closed (133 No's saved)	107	20.05.2022	835
4	Other	Overhauling of Air Dryer	No's	68	20.08.20 - 19.08.22	4330	Short closed (28 No's saved)	2119	22.07.2022	2211
<b>Grand Total</b>						<b>49270</b>		<b>38050</b>		<b>11220</b>

\* Nature of contract - OBHS/AMC/STN CLEAN/OTHERS

Amount in '000 of ₹

\*\* Action taken - scope reduced/Short closed/Not renewed/ Converted to outcome based or arc

## DISPOSAL OF SCRAP



Year	Scrap Target (MT)	Ferrous Scrap Disposal (MT)	Non-Ferrous Scrap Disposal (MT)	Total Scrap Disposal (MT)
<b>2020-21</b>	<b>320</b>	<b>570.15</b>	<b>24.81</b>	<b>594.96</b>
<b>2021-22</b>	<b>320</b>	<b>1266.71</b>	<b>136.65</b>	<b>1403.36</b>
<b>2022-23</b>	<b>330</b>	<b>1045.73</b>	<b>76.2</b>	<b>1121.93</b>
<b>2023-24 (till 14 Jul'23)</b>	<b>65</b>	<b>60.16</b>	<b>3.12</b>	<b>63.28</b>

### ACTION PLAN FOR SYSTEM IMPROVEMENT

- Sharing of manuals, and maintenance literature online through Google drive.
- Various drives conducted proactively covering locomotives in the shed during maintenance to improve reliability for failure-prone areas.
- Cross-section audit teams of supervisors are formed for conducting section audits as per schedule.
- Counseling of staff related to safety and giving maintenance guidelines to ensure quality work according to SMI and RDSO.
- Training of staff on AC loco maintenance, critical circuit diagrams, loco safety checks, and others are conducted in DTC on regular basis.

**In order to reduce the failures and improving reliability of locomotives, various drives have been launched. The details of Ongoing drives**

- Monsoon Drive
- Drive for checking of chassis crack in WDM3D locos.
- Drive for HOM operation and maintenance in AC locos.
- Drive of additional fuel pump circuit breaker modification work.
- Under truck safety drive March'2023.
- Drive for checking of sand box in AC locomotives.
- Drive for checking condition of relay gauge glass alignment and indication in AC locomotive.
- Drive for Drain of Moisture in Locomotive.
- Drive for Golden safety drive for under frame equipment of AC locomotives.

**Completion of drive from 01 Apr'2023 to 13<sup>th</sup> Jul'2023**

- Drive for cleaning of loco roof insulator/other equipment in AC locomotives.
- Drive for cleaning under gear checking drive in AC locomotives.
- Summer & fire prevention safety drive.

**FACILITIES AT DIESEL SHED /JHS**



**SIMULATOR**



**PIT WHEEL LATHE**

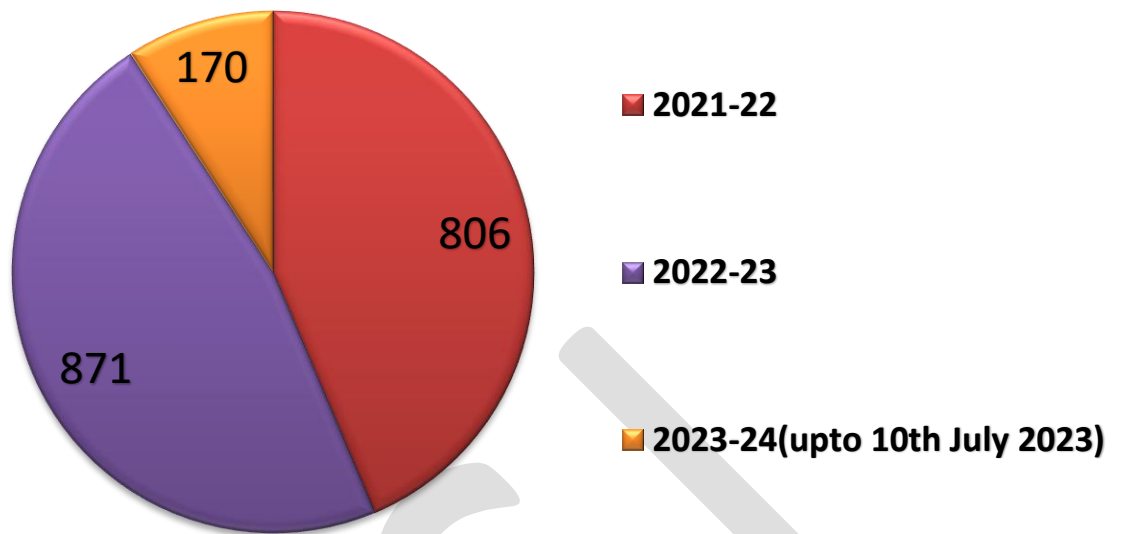


**EFFLUENT TREATMENT PLANT**

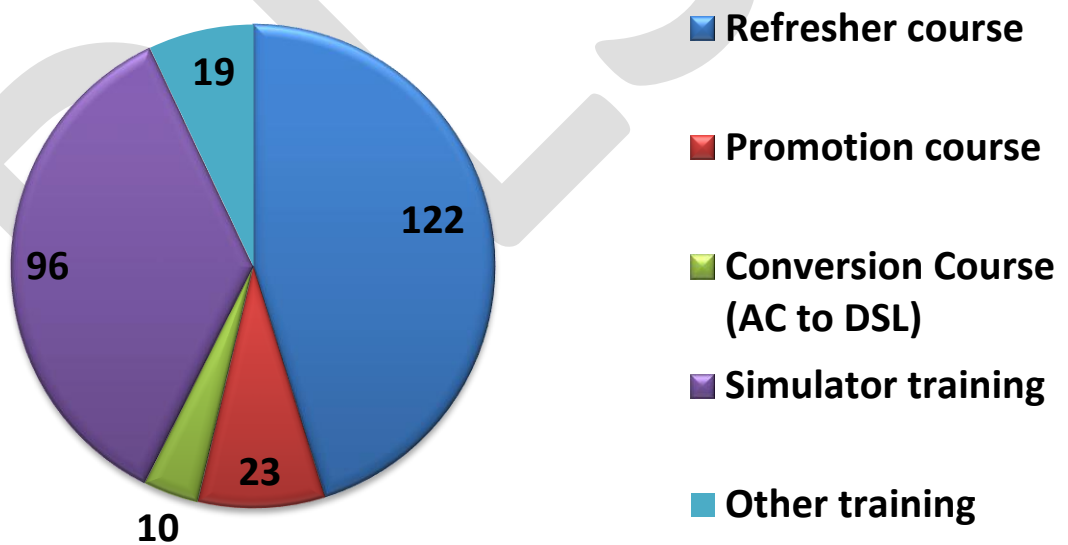


## DIESEL TRAINING CENTRE, JHANSI

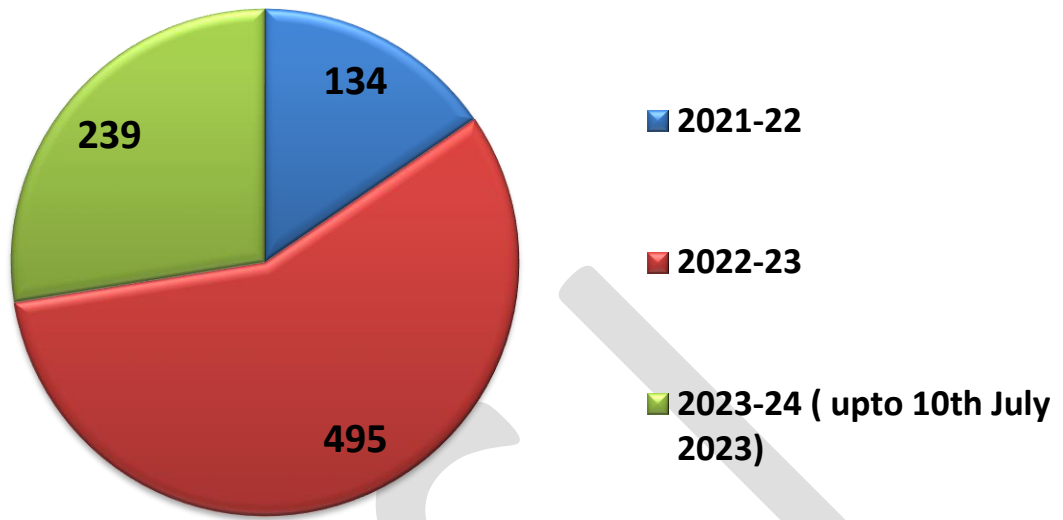
- Year wise staff trained by DTC/JHS (Running Staff)



- Course wise staff trained by DTC/JHS (Running staff) 2023-24 (up to 10<sup>th</sup> July 2023)



- Year wise staff trained by DTC/JHS (Maintenance staff)



- Course wise staff trained by DTC/JHS (Maintenance staff) 2023-24 (up to 10<sup>th</sup> July 2023)

