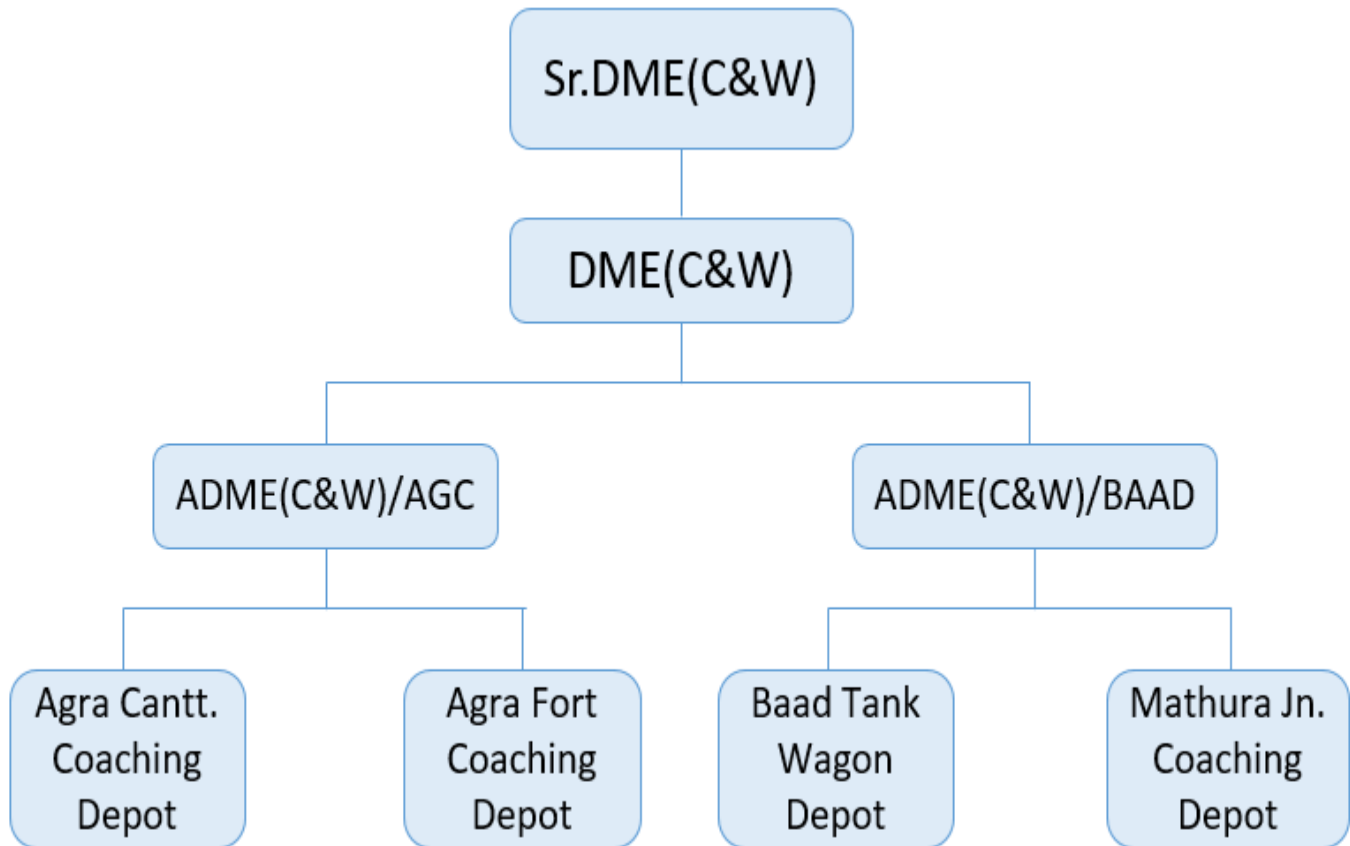


Mech(C&W) Agra Division Overview

Organization Structure:-



WORKING CENTRE OF C&W Agra Division:-

- AGRA CANTT. C&W DEPOT/ SICKLINE.
- AGRA FORT C&W DEPOT.
- MATHURA C&W DEPOT.
- BAAD TANK WAGON DEPOT.

Coaching Depot, Agra Cantt.

Coaching Depot AGC is engaged with Primary and Terminal Examination of Mail/Express, Passenger trains. At AGC originating, terminating, rolling-in/out examination and watering on complaint of en-route Mail/Express trains are being done.

Work load

1. Primary maintained trains at AGC

SN	Train No.	Ex - To	Train name	Load	Frequency
1	12547/48 Rake 02(LHB)	AGC-SBIB	AGC-SBIB Express	22 =44	04 days in a week
2	12177/78 (LHB)	MTJ-HWH	Chambal Express	22=44	Weekly
3	20975/76 (LHB)	AGC-HWH	Chambal Express	22=44	Weekly
4	11901/02 (02 rake)	AGC-JHS	Passenger	12=24	Daily
5	04165/66	AGC-ADI	Express	24=48	Wednesday (suspended)
6	04167/68	AGC-ADI	Express	24=48	Sunday (suspended)
7	11905/06	AGC - HSX	Express	17=34	Daily

2. Secondary Maintenance: Nil

3. Turn Round attention:

S N	Train No.	Ex - To	Train name	Load	Frequency
1	14211/12	AGC-NDLS	Intercity Express	22=44	Daily
2	12161/62	AGC-LTT	Lashkar Express	22=44	Weekly(Sat)
4	13167/68	AGC-KOAA	AGC-KOAA Express	22=44	Weekly(Sat)
5	11901/02	AGC-VGLB	AGC-VGLB Passenger	12=24	Tri-Weekly (Mon, Thu & Fri)

4. Other activities:

- 4.1 Maintenance of Inspection Carriages.
- 4.2 Complaints of Goods train.
- 4.3 Maintenance of Fire Extinguishers of Mechanical department over Agra Div
- 4.4 Operation of Quick watering system for carriage watering in enroute trains.
- 4.5 Flying Squad works in section.
- 4.6 Maintenance of ART & ARME and rescue work.
- 4.7 Divisional Control (C&W) Management
- 4.8 Attention of the Sick Wagons Detached by Traffic.
- 4.9 Attention to HABD (Qty: 03 nos) Alarms (DHO-MIA section near gate no.470, installed at DN Main line & 3rd Line, UDMR-HAB section at 1438/11 Km).

5. Major Infrastructure Facilities

SN	Description	Qty	Capacity
1	Automatic Coach Washing Plant	01 no.	
2	Pit line with Catwalk (CAMTECH Design)	02 nos	26 coaches (650 m)
3	Sick line shed having 04 nos. maintenance Pit (with 15 Ton EOT)	80 X 20 mtr (1600 sqmtr)	06 coaches
4	Sick line service Building	(80 X7.5 mtr)X2 (1200 sqmtr)	
5	Depot Store Building	140 sqmtr	
6	New BTC Building	(40 X7.5 mtr) (300 sqmtr)	
7	Service Building for Rake Maintenance	160 sqmtr	
8	Overhead water Tank	01 nos	225000 ltrs
9	Linen Room	01 no	
10	Bio-Toilet Lab	01 no	
11	CNC Underfloor Wheel Lathe	01 no	BG Coach
12	Water Recycling Plant	01 no.	0.5 MLD

6. Major M&Ps available:

15 Ton EOT, Electric & Diesel Air compressors, DG sets (250 KVA & 63KVA each), Fork-lifter, Platform truck, Synchronizing jacks, Hydraulic jacks, SCTR, Quick watering system, CNC under floor wheel lathe.

COACHING DEPOT, AGRA FORT

Coaching depot AF is engaged with Primary Maintenance of Mail/Express, Passenger trains. At AF originating, terminating, rolling-in/out examination and carriage watering on complaint of en-route Mail/Express trains and en-route unusual attention of Coaching and Freight are being done.

Work load

1. Primary Maintained trains at AF

SN	Train No.	Ex - To	Train name	Load	Frequency
1	12195/96	AF-AII	Intercity Express	19=38	Daily
2	12179/80	AF-LJN	Intercity Express	17=34	Daily
3.	01913/14	AF-ETAH	AF-ETAH Express Special	7=14	Daily

2. Secondary Maintenance: Nil

3. Trains Turn Round Attention:-

S N	Train No.	Ex - To	Train name	Load	Frequency	Remark
1	22987/98	AII-AF	SF Express	14=28	Daily	-
2	15055/56	AF-RMR	Express	15=30	Tri-Weekly	-
3	05913/12	AF-KOTA	Passenger	12=24	Daily	-
4	05914/11	JAB-KOTA	Passenger	10=20	Daily	-
5	19817/18	AF-RTM	Passenger	12=24	Daily	At JAB
6	05414/13	AF-KSJ	Passenger	12=24	Daily	-
7	01907/08	IDH-BTE	Passenger	07=14	06 days/week	-

4. Other activities:-

- 4.1 Attention Complaints of Goods trains.
- 4.2 Flying Squad works in section for unusual attention
- 4.3 Sick Wagons Detached by Traffic
- 4.4 Attention to HABD (Qty: 03 nos) Alarms (Locations: KBP-CHLR section near LC-03, BW-KPO section near LC-95, BR-BXN section near LC-06)

5. Major Infrastructure Facilities:-

- 5.1 Coaching Sick line NIL
- 5.2 Examination Pit line 01 no. (22 Coaches, non-standard without Catwalk)
- 5.3 Stabling line NIL

6. M&P Position:

SN	Installed at Place at AF	Machine	Cap.	Make
1	Washing pit	Diesel compressor	300 CFM	Atlas Cop Co India Ltd/pune
2	Rake maint.	Rake test rig (Qty: 02nos.)		Escort faridabad
3	Rake maint.	Welding transformer	400 Amp	S K industries , India
4	Compressor room	Platform truck	3T	Jaldoot material pvt Ltd.
5	Rake Maint.	Diesel Air Compressor	300 CFM	Kirloskar

An over view Coaching Depot, MTJ

Coaching depot MTJ is engaged with Rake Maintenance of Mail/Express, Passenger trains. At MTJ originating, terminating, Rolling-in/out examination of en-route Mail/Express trains and En-route unusual attention of Coaching and Freight trains are being done.

Work load:

1. Primary maintained trains at MTJ

SN	Train No.	Ex - To	Train name	Load	Frequency
1	04173/74	MTJ-JP	Passenger	12=24	Daily
2	04171/72	MTJ-AWR	Passenger	12=24	Daily

2. Secondary Maintenance: Nil

3. Trains Turn Round Attention at MTJ

SN	Train No.	Ex - To	Train name	Load
1	04793/14726	MTJ-SWM	Passenger	12=24
2	14725/04794	MTJ-BNW	Passenger	11=22
3	05345/46	MTJ-KSJ	Passenger	12=24
4	05387/88	MTJ-KSJ	Passenger	12=24
5	22531/32	MTJ-CPR	MTJ-CPR Express	24=48
6	19109/10	KOTA-MTJ	KOTA-MTJ MEMU	12=24
7	04446/04967	SSB-MTJ	SSB-MTJ EMU	12=24
8	04420/19	GZB-MTJ	GZB-MTJ EMU	12=24
9	09279/80	BXN-MTJ	BXN-MTJ MEMU	12=24
10	20490/89	MTJ-BME	Barmer SF Express	19=38

4. Other activities:

- 4.1 Goods trains Complaints attention.
- 4.2 Enroute unusual/failure attention.
- 4.3 Attention to the Sick Wagons Detached by Traffic.
- 4.4 Attention to HABD (Qty: 03 nos) Alarms (Locations: SHLK-HDL section at 1453 Km UP main line & 3rd Line, GZKA-OTD section at 1512 Km)

5. Major Infrastructure Facilities

- 5.1 Examination Pit line 01 no. (13 Coaches, without Catwalk)
5.2 Washable Apron with Catwalk 01 no. (10 coaches)
5.3 Washable Apron line 01 no. (24 Coaches)

6. M&P Position:

SN	Installed at Place at MTJ	Machine	Cap.	Make
1	Rake Maintenance	Diesel operated compressor	275 CFM	Atlas Cop Co India Ltd/Pune
2	Rake Maintenance	Electric operated compressor	300 CFM	Atlas Cop Co India Ltd/pune
3	MTJ Depot	Break Down Truck	-	Tata
4	Sick line/fitted on Break Down truck	Hydraulic Crane-	2 Ton	Desol Automation Engineers Ltd.
5	Rake maint.	Rake test rig (Qty: 02nos.)		Escort faridabad
6	Rake maint.	D.C Portable generator set	4 KVA	Navketen Pvt. Ltd. Kolkata
7	Sickline	Electric welding set	300 AMP	Tad Arc
8	Sickline	Welding transformer- Phase Oil Cooled	400 AMP	Roxy Weld

Tank Wagon Depot Baad

Tank wagon Depot, Baad, located at a distance of 10.5 KMs from Mathura Junction, is a major tank Wagon Depot dealing with maintenance of tank wagons used for transportation of various oil products from Mathura Refinery to various destinations safely.

Tank Wagon Depot, Baad has a facility of ROH shed, sickline repairs and various types of Yard examination. In this repair depot placement and removal of sick wagon and fit wagon can be done from both side. i.e. Delhi & Agra end. It has a Boiler House, ETP, Master Valve gantry etc. ROH of BTPN & IOH of BVZI is being carried out in the ROH shed.

CC, Premium and Intensive Examination of BTPN rake are being done at Baad examination Yard.

1. TYPE OF WAGON ATTENDED

S.N.	DESCRIPTION
1.	BTPN + BTFLN
2.	BVZI+BVCM
3.	BOBYN

2. TANK WAGON DEPOT BAAD AT A GLANCE

1. Situated in AGC-PWL section of Agra Division at Km.1386.84
2. Distance from NDLS 150.82 Km.& 43.57 Km. from AGC.
3. Situated near Mathura Refinery just 10 Km. from Mathura Junction Station.
4. POL maintenance Depot.
5. Two siding namely – HPCL & BPCL siding is fed by Baad Yard. Both siding are private siding, maintained by Railways.

3. IOCG Siding.

1. IOCG siding is basically loading siding and major products being loaded are NPA,MS,HSD, SKO,ATF, FO,BIT.
2. Occasionally unloading is also done in IOCG and major products are – SRGO & MTBE.

4. Details of Baad Yard :

1. BTPN Rakes receiving & dispatch yard.
2. Marshalling yard.
3. Repair depot.
4. Exchange yard.

5. BTPN Rakes Receiving & Dispatching (R&D) Yard.

BTPN rakes receiving & dispatching yard having 7 electrified lines (R1, R2, R3, R4, R5, R6 & R7) of full length. One engine escapes line of full length. Baad Yard has total 09 lines as to receive and dispatch loads out of nine nos. of lines only lines R 8 and R9 are non-electrified lines and are nominated for CC examination having all facilities.

For reception of train from up direction (i.e. MTJ end) direct reception facility is available supported by waiting line at MTJ end of Yard.

For reception of from down side (i.e. AGC end) direct reception facility is available for R1 and indirect reception facility is available for R2 to R7.

For dispatch is down side direction all R&D lines are provided with sig. supported with DN Waiting Line.

After Examination, BPC is issued online through FMM portal.

6. Repair Depot :

There are three non-electrified lines available in repair depot, all lines are used for repairs of sick wagons. In addition, two lines are available for placement on steam cleaning and Master Valve repair Gantry where steam cleaning Chemical Cleaning and attention to Mater valve, Bottom Discharge Valve and Barrel is given.

7. Sick Line (infrastructure):-

S.N.	Line No.	Length in mtrs	Capacity
1.	Repairs line No.1	110	8 Wagons
2.	Light repair line No.2	100	7 Wagons
3.	Light repair line No.3	100	7 Wagons
4.	Steam Cleaning facilities		06 Wagons
5.	Master Valve/ Barrel testing Gantry		06 Wagons

8. ROH Infrastructure:

- ROH covered shed (Size: 90 mtr X 15 mtr)
- Trolley section Shed (Size: 25 mtr X 12 mtr)
- EOT capacity 15/3 TON: 02 Nos.
- Boiler Capacity: 4Ton.
- Number of repair lines: 02 nos.
- Berthing capacity: 04 wagons on each lines.
- UST facility under canopy.
- Equipped with compressed Air supply line, Welding facilities, Manipulators, trestles etc.

9. Surface wheel Lathe at Tank wagon Depot Baad



Surface wheel lathe commissioned at Tank Wagon depot Baad on 20.12.2021. Hitherto, wheels were transported to JHSW for re-profiling to meet wheel replacement need during ROH of BTPN wagons at TWD, Baad. Installation and commissioning of CNC Surface wheel lathe at TWD/Baad, has eliminated dependency on JHSW for feed of re-profiled wheels. Also, it has resulted into both time saving and revenue saving.